

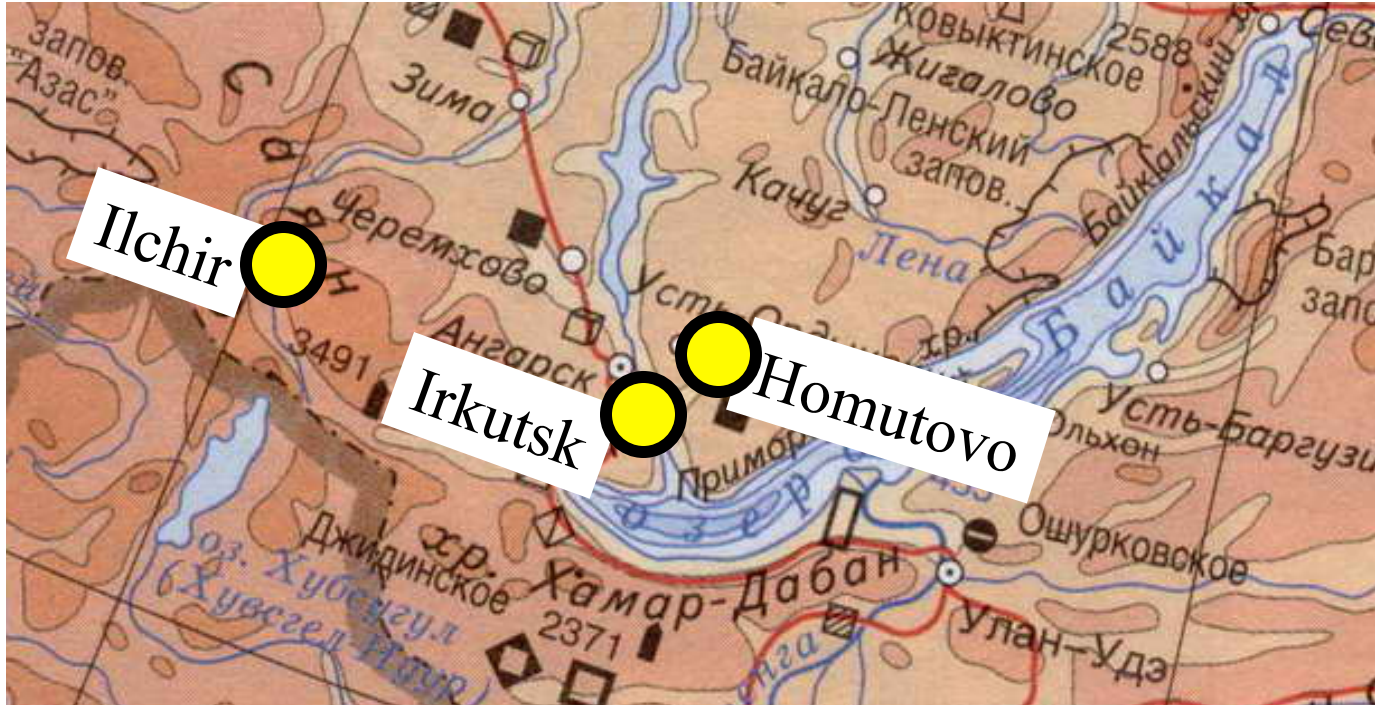
Influence of a city on the variability of climatic characteristics

Voropay Nadezhda Nikolaevna
voropay_nn@mail.ru

¹Institute of Monitoring of Climatic and Ecological Systems SB RAS, Tomsk, Russia

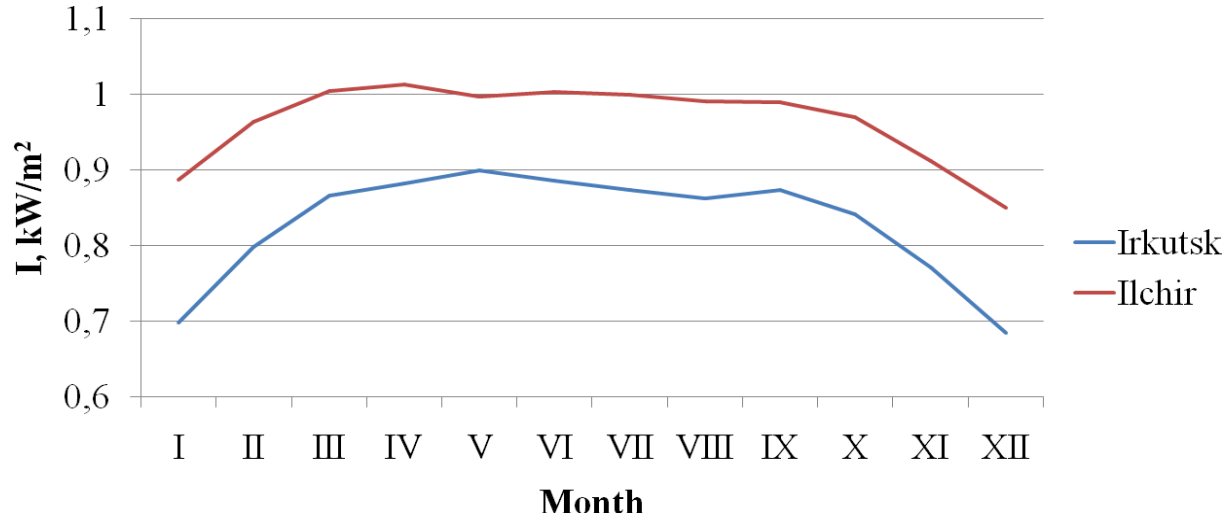
²V.B.Sochava Institute of Geography SB RAS, Irkutsk, Russia

Stations Location Map

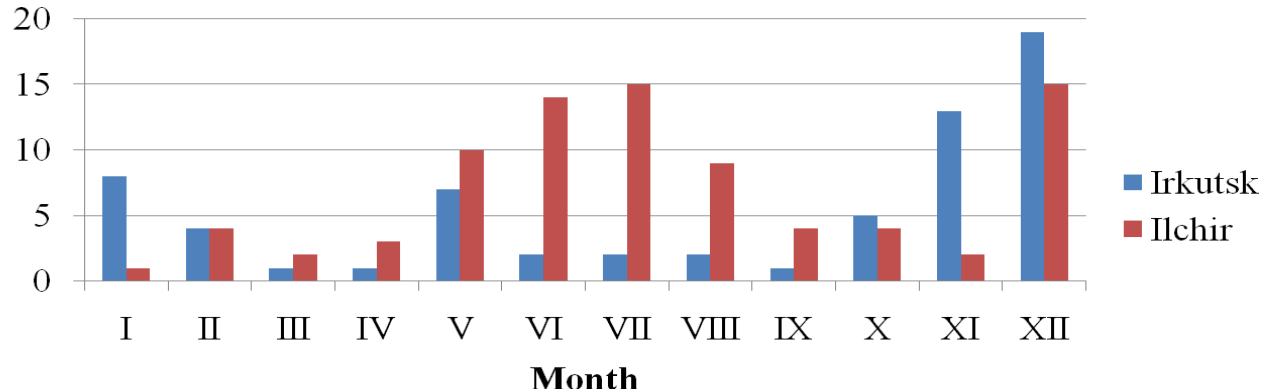


station	height above sea level, m	latitude	longitude
Irkutsk	467	52°16′	104°19′
Ilchir	2092	52°03′	103°05′
Homutovo	453	52°28′	104°25′

The intensity of direct solar radiation at noon on a perpendicular surface with cloudless sky



The number of missing observations for 1961-1989



**Difference in monthly and annual air temperatures
at weather station Irkutsk and Hومتovo for 1960-2008, °C for 1961-2008**

	I	II	III	IV	V	VI	VII	VIII	IX	X	XI	XII	Year
Mean	4,25	4,15	2,73	0,46	0,17	-0,2	0,04	0,23	0,51	1,37	2,96	3,67	1,69
Min	3,3	3,0	1,6	0,0	-0,3	-0,9	-0,3	-0,2	0,2	0,9	2,1	2,5	1,33
Max	5,0	5,3	3,9	1,2	0,7	0,3	0,7	0,7	1,0	1,9	3,9	4,6	2,08

Trends in monthly and annual air temperature (°C/10 yr)

	I	II	III	IV	V	VI	VII	VIII	IX	X	XI	XII	Year
Hومتovo	0,38	1,09	0,47	0,41	0,39	0,36	0,40	0,34	0,36	0,41	0,56	0,49	0,47
Irkutsk	0,41	1,09	0,52	0,46	0,39	0,30	0,36	0,31	0,33	0,46	0,47	0,51	0,46