

Architecture of the Web mapping application for working with NetCDF datasets

Titov A.G., Gordov E.P., Okladnikov I.G.

Institute of Monitoring of Climatic and Ecological Systems SB RAS / TB ICT SB RAS, Tomsk, Russia

Introduction

- Geospatial NetCDF (Network Common Data Form) datasets related to meteorology and climate
- INSPIRE (The INfrastructure for SPatial InfoRmation in Europe) basic requirements to data visualization:
 - Data overview and image navigation
 - Scrolling, scaling and graphical overlay
 - Displaying map legends and metadata information
- Web mapping systems (Web-GIS) as complexes of interconnected software tools for working with geospatial data including import/export, cataloging, processing and visualization and so on
- GIS web client architecture for working with geospatial NetCDF dataset archive is presented (within "Climate" platform)

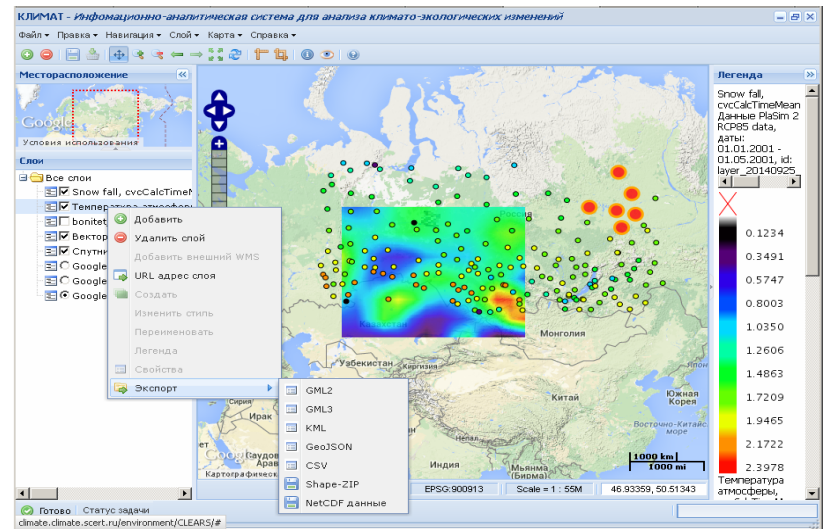
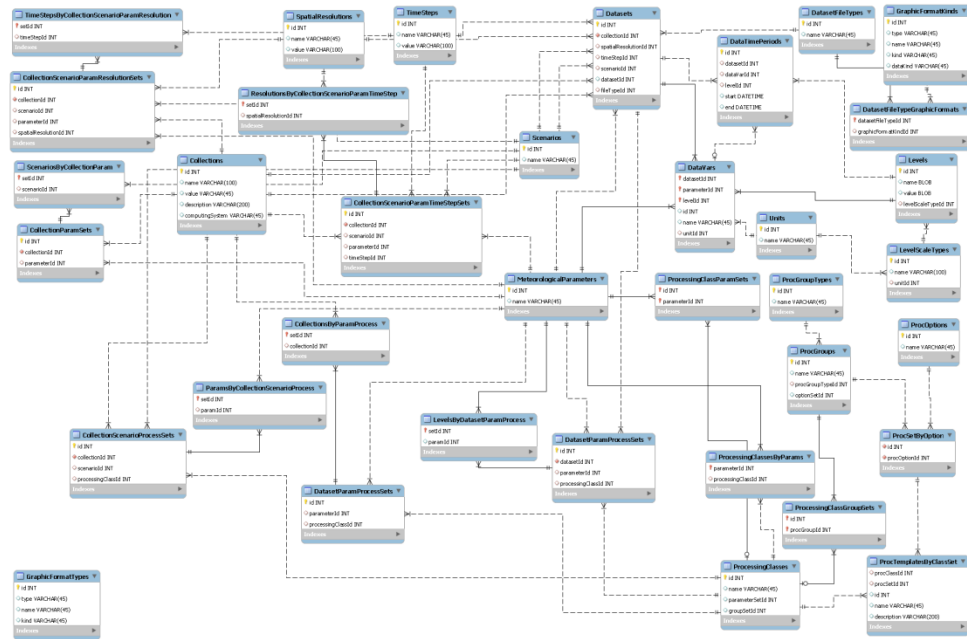
General description

- Tier of NetCDF metadata represented in JSON format

- Tier of JavaScript objects implementing methods handling the following:

- NetCDF metadata
- XML object for configuring user calculations, input and output (task XML object)
- WMS/WFS cartographical services

- Graphical user interface (GUI) tier representing JavaScript objects realizing web application business logic





Thank you for attention

June 20 – 30, 2015

CITES-2015, Tomsk, Russia

