

# CITES 2019

## Report of Sevastopol group

**Puzina Oksana<sup>1</sup>, Lubkov Andrey<sup>2</sup>, Evstigneeva Natalia<sup>1</sup>, Senderov Maksim<sup>1</sup>**

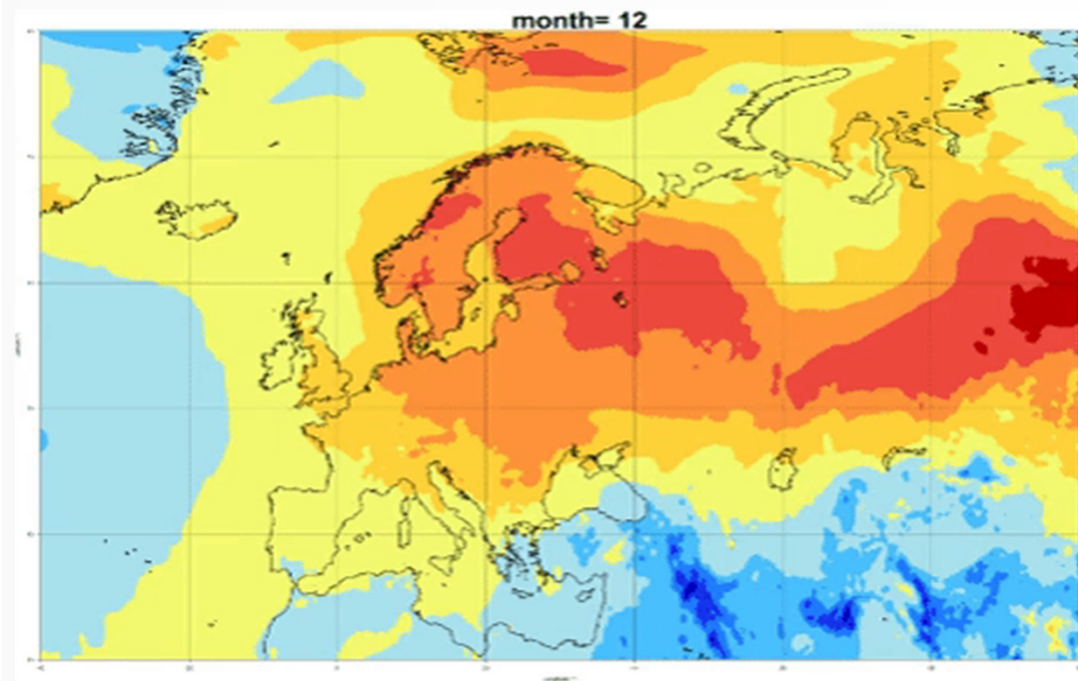
**<sup>1</sup> – Marine Hydrophysical Institute of RAS**

**<sup>2</sup> – Institute of Natural and Technical Systems  
Sevastopol, Russia**

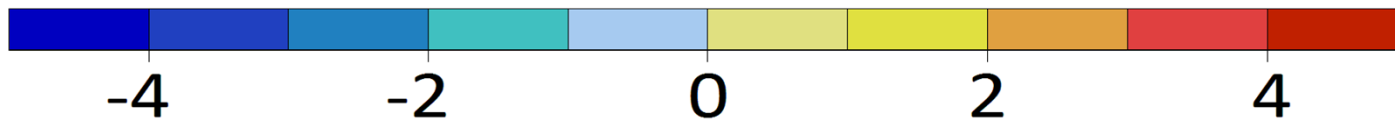
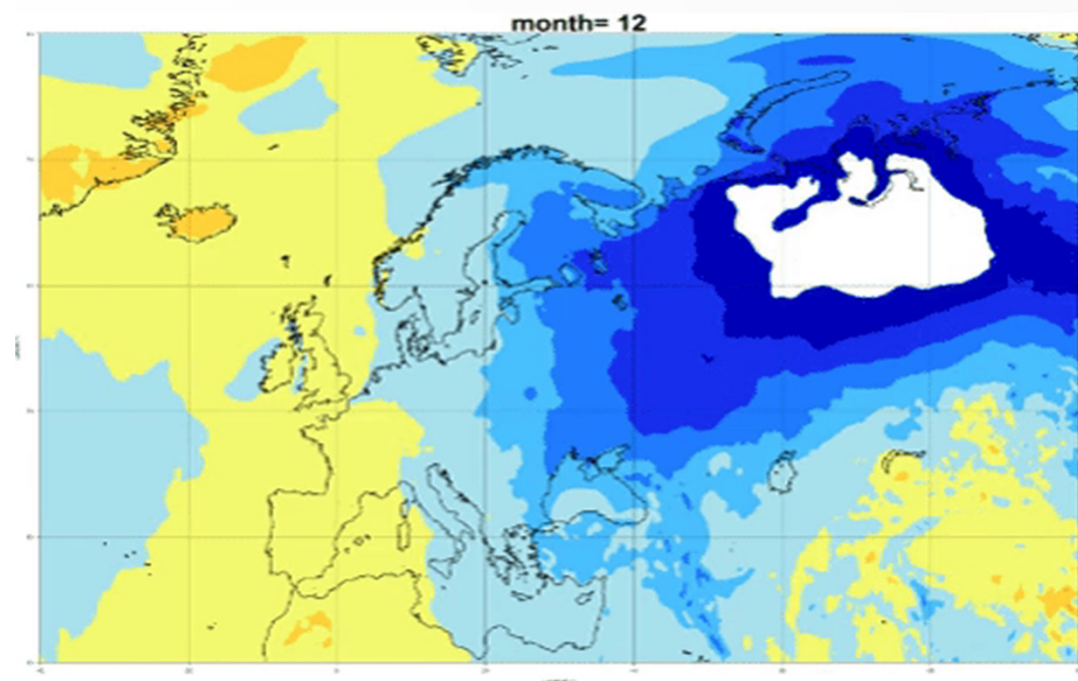
- **Work with ESMWF, ERA5**
- **Comparison of different forecasts (ERA5, CHFP)**
- Ensemble analysis
- Date base IRI

Temperature response to El-Nino events in Atlantic-Europe

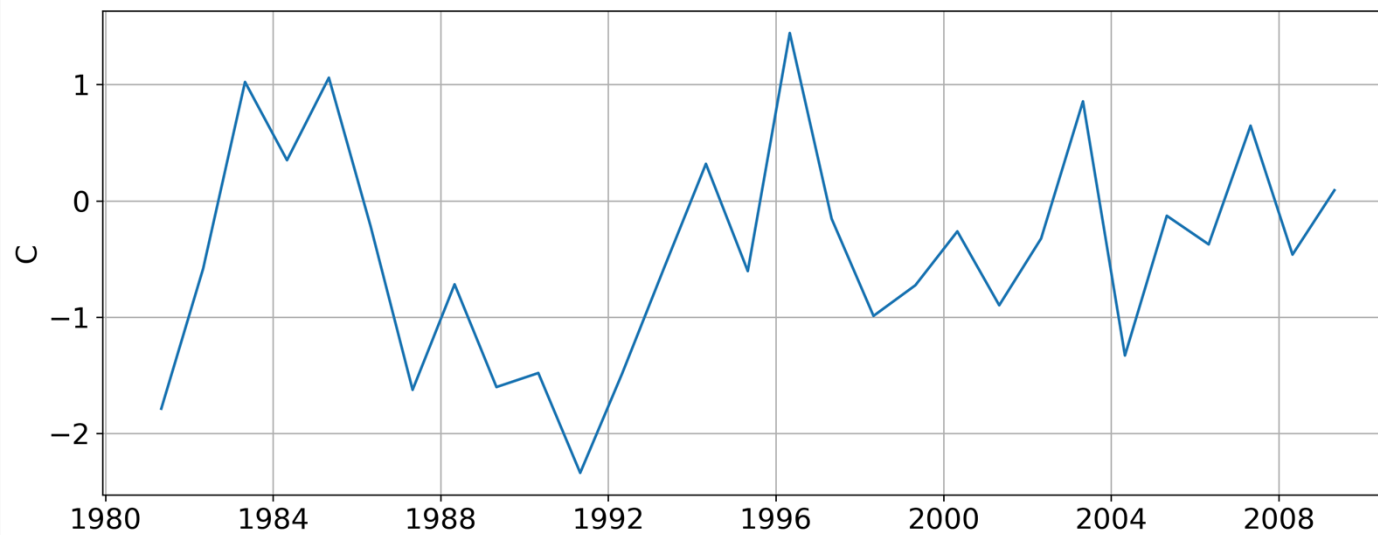
## Eastern El-Nino



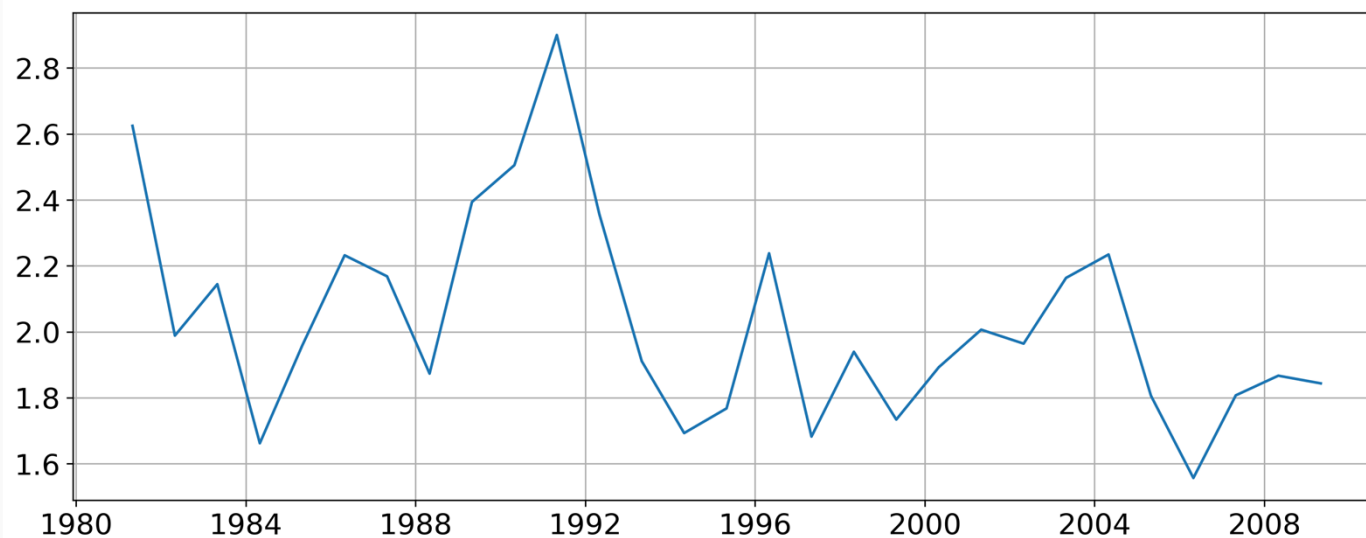
## Central El-Nino



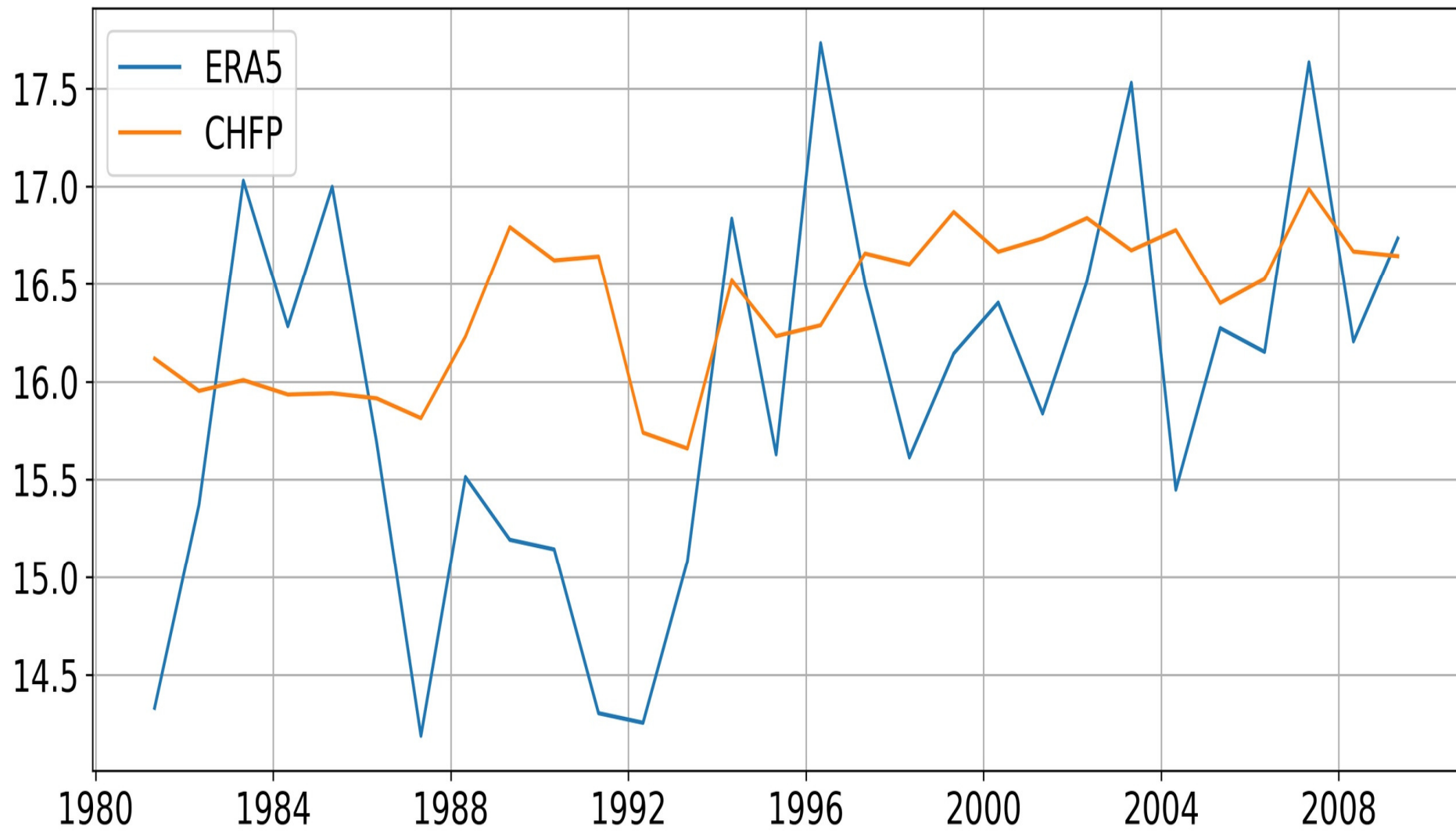
## Work with ESMWF, ERA5 and CHFP



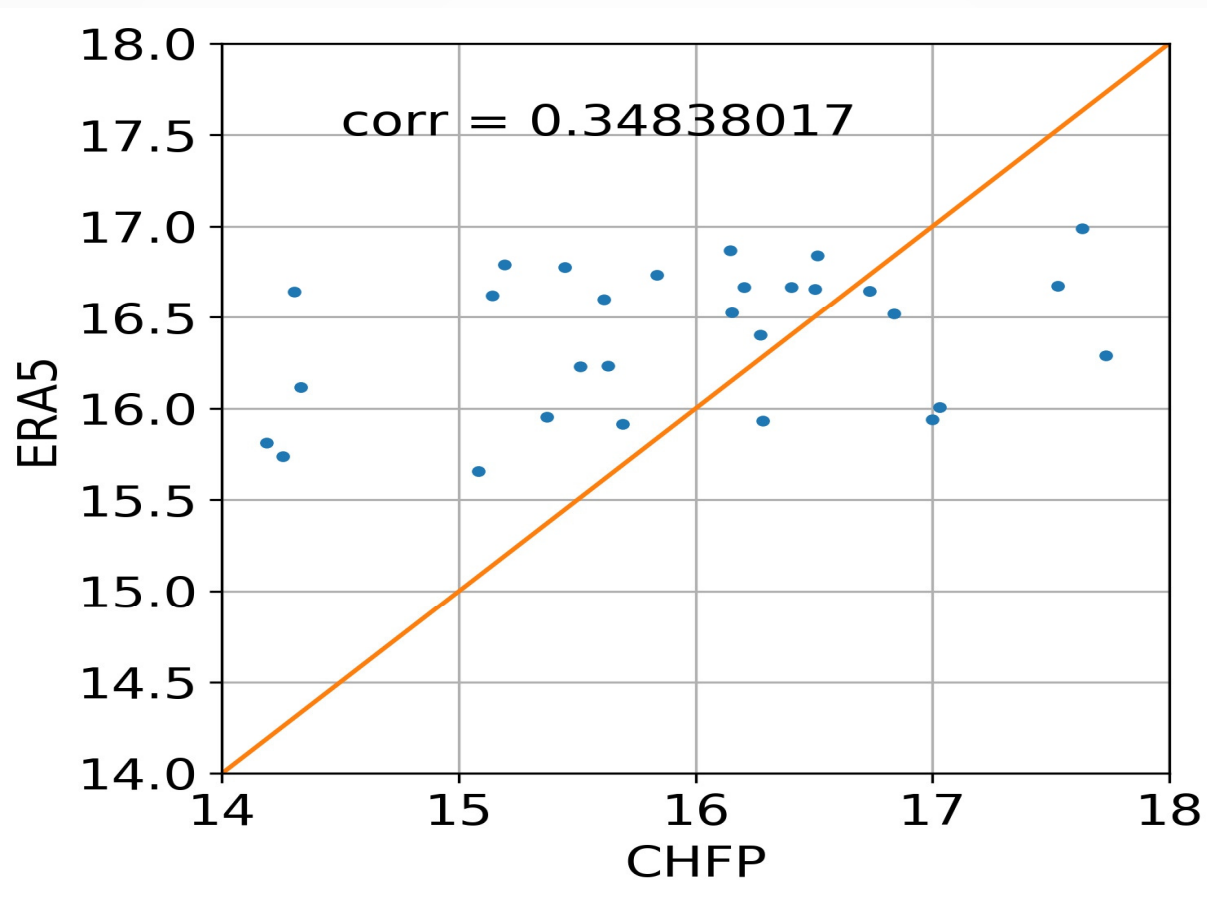
**Difference ERA5, CHFP**



## Comparison of different forecasts (ERA5, CHFP)



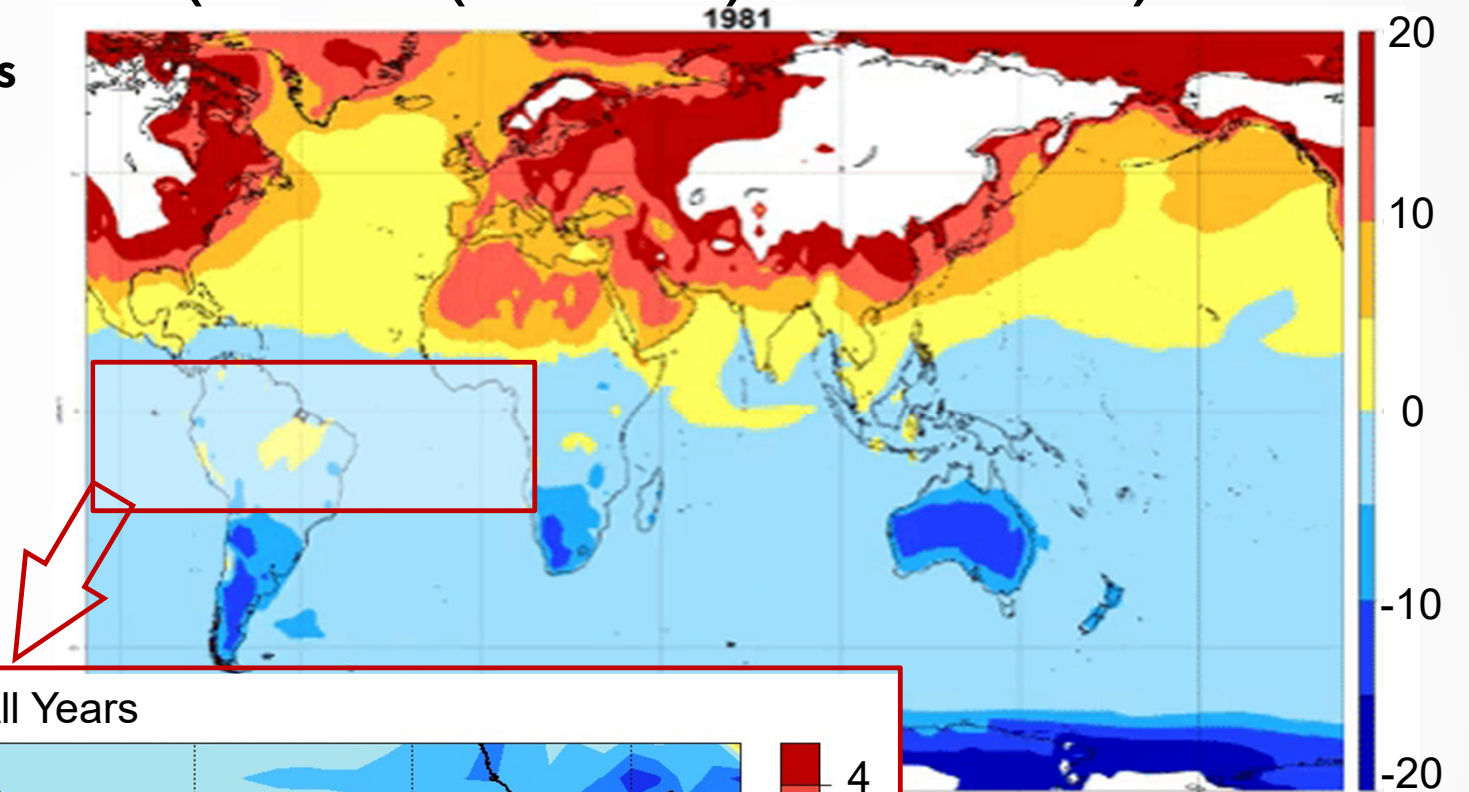
## Comparison of different forecasts (ERA5, CHFP)



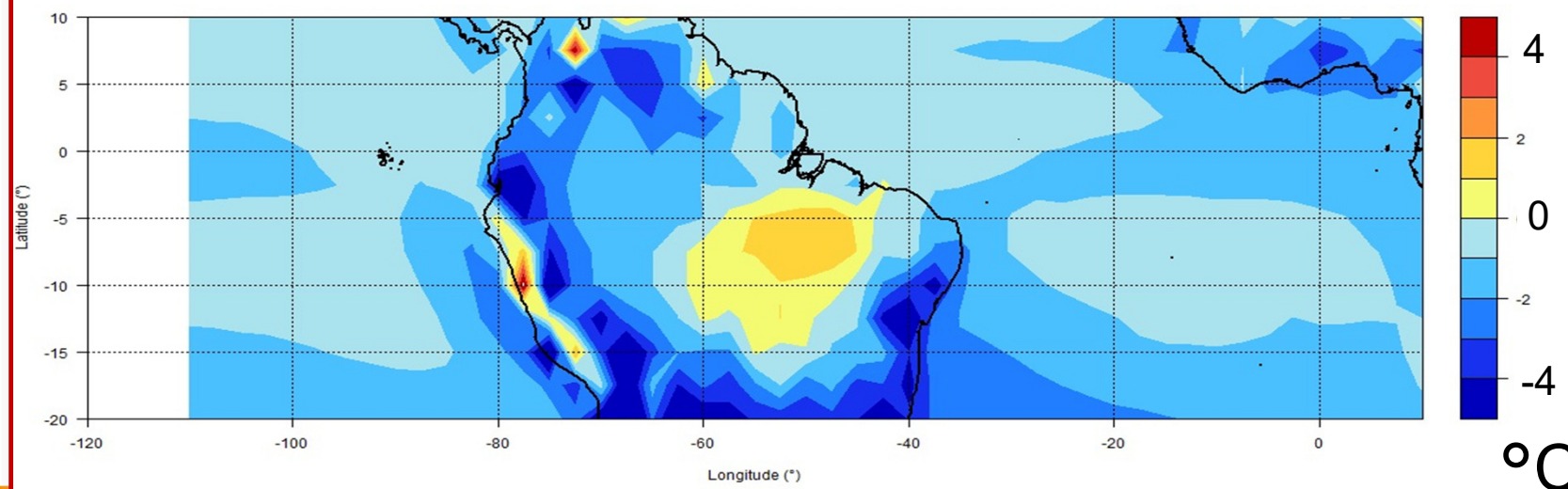


# Model error (mean(CHFP) – ERA-5)

- Comparison of different forecasts (ERA5, CHFP)

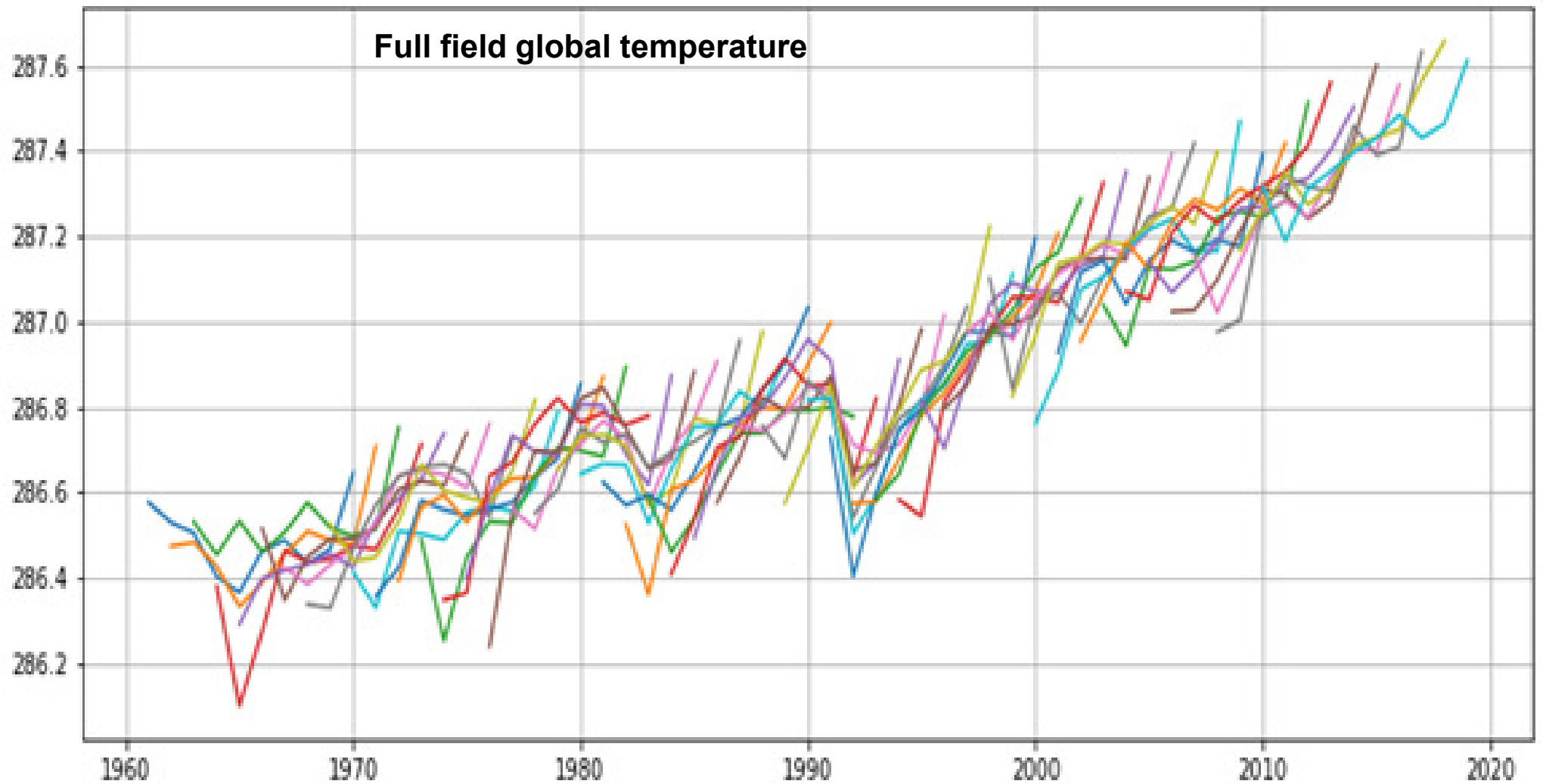


All Years

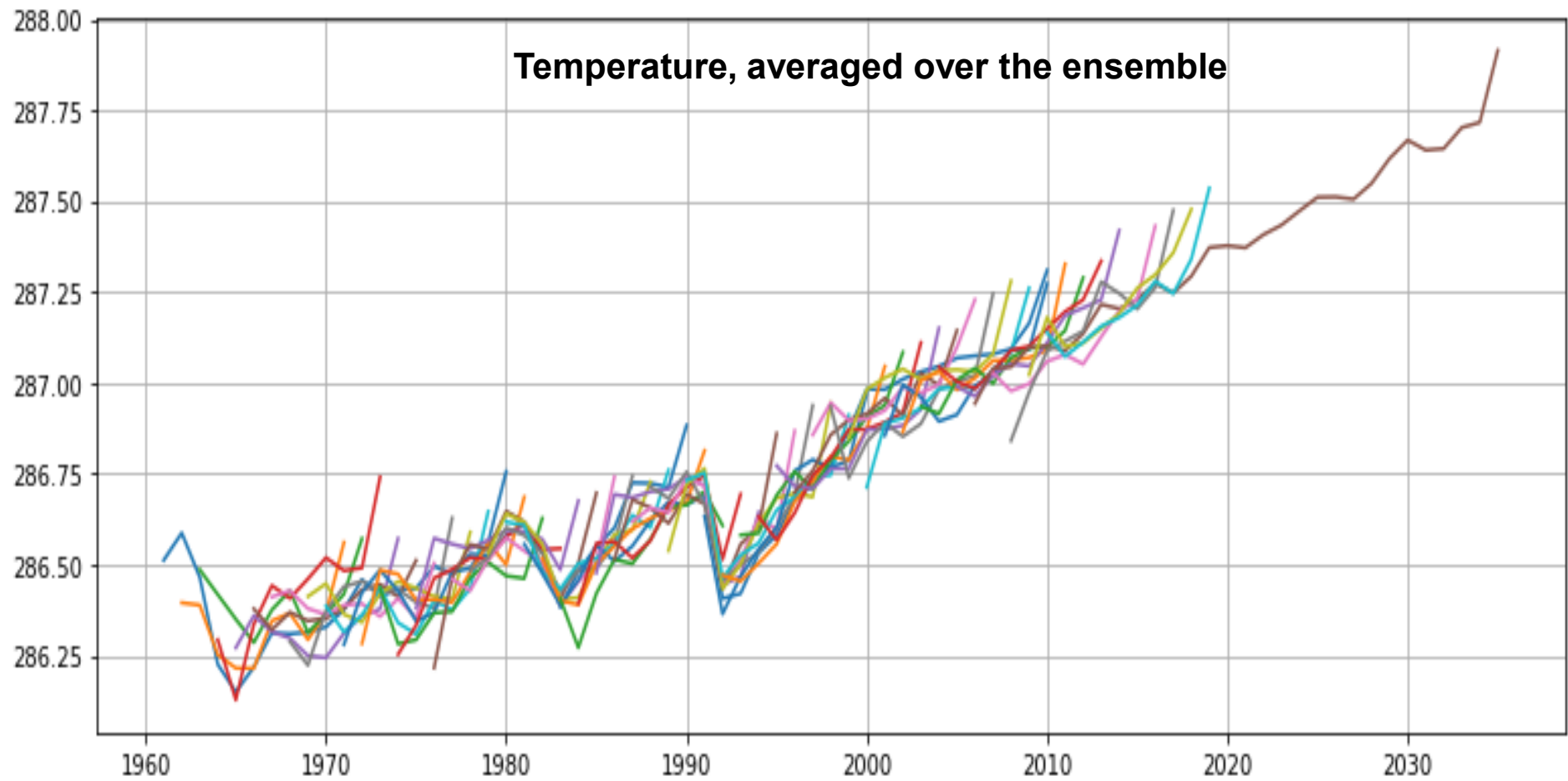


## Ensemble analysis

Using Decadal forecasting  
Bias correction

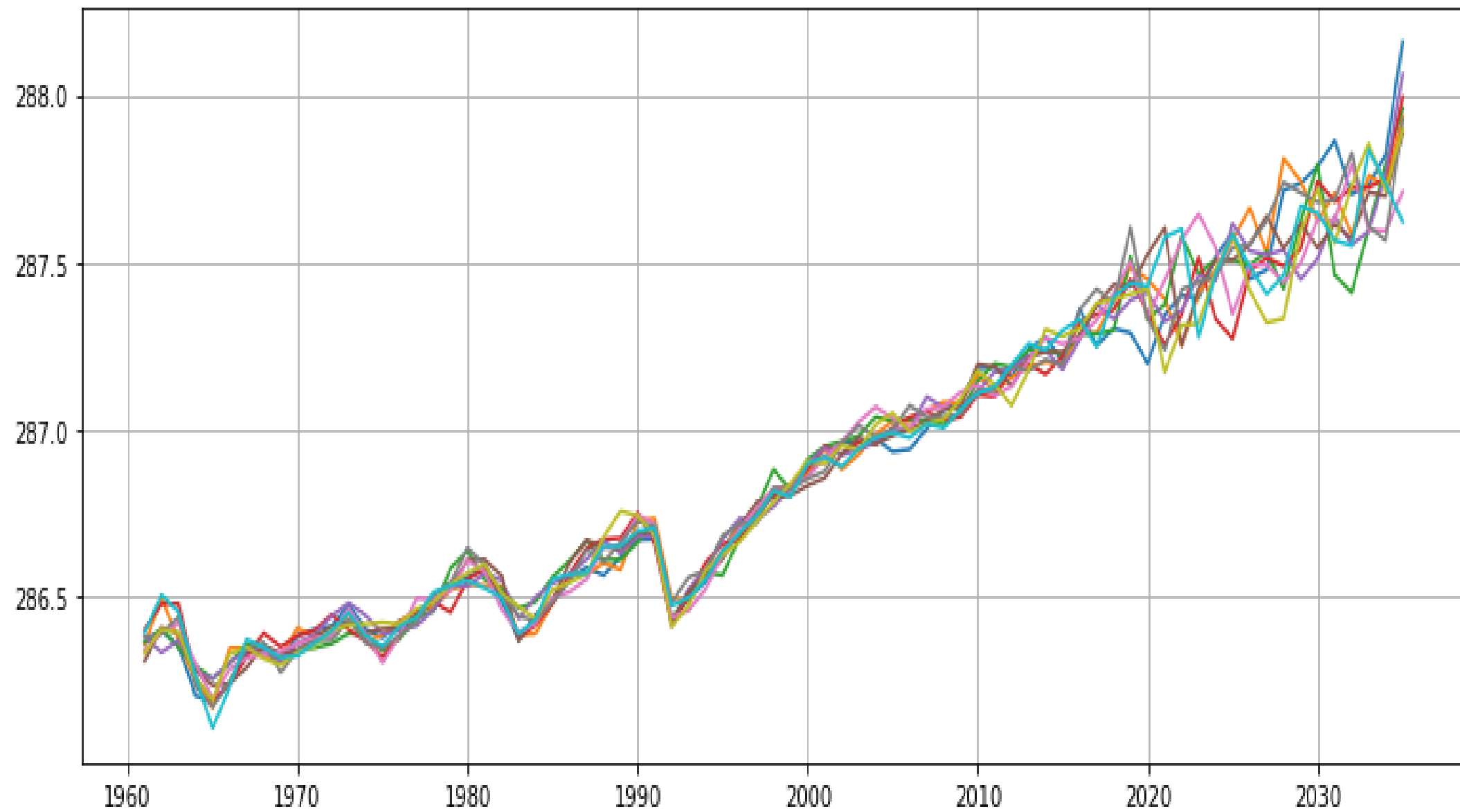




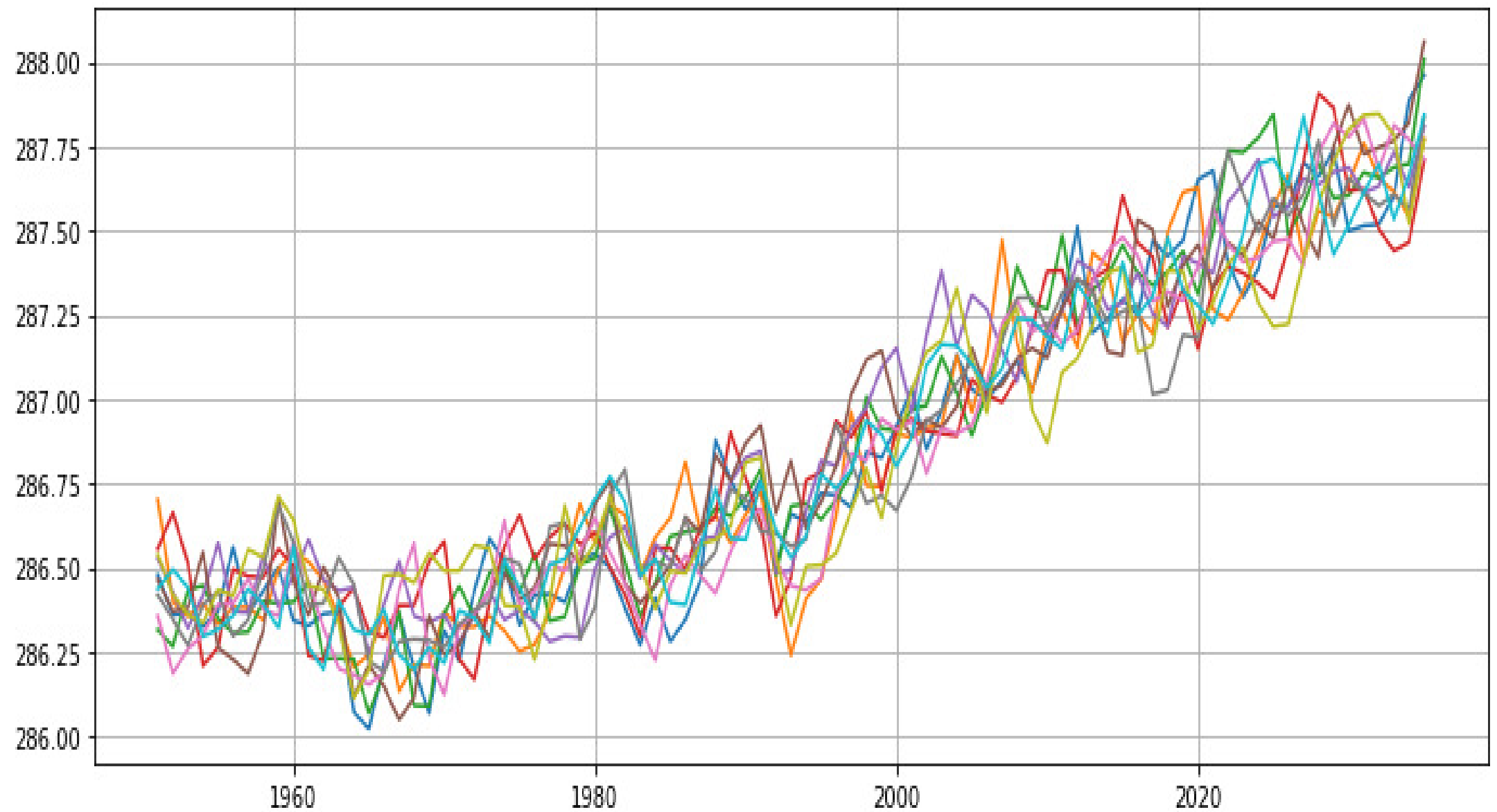


**Increase in temperature**

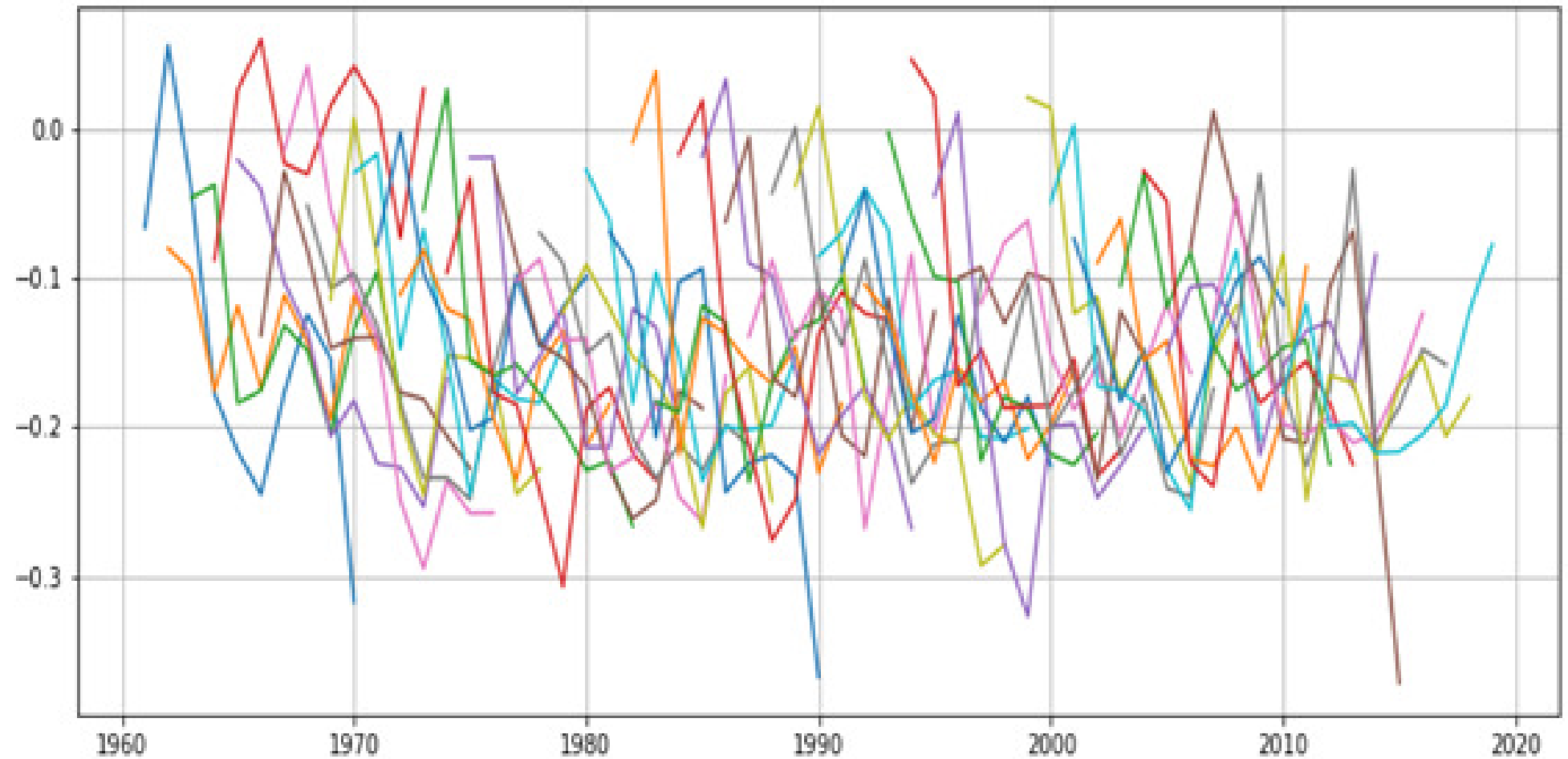
**Mean anomalies ensembles, averaged on years**



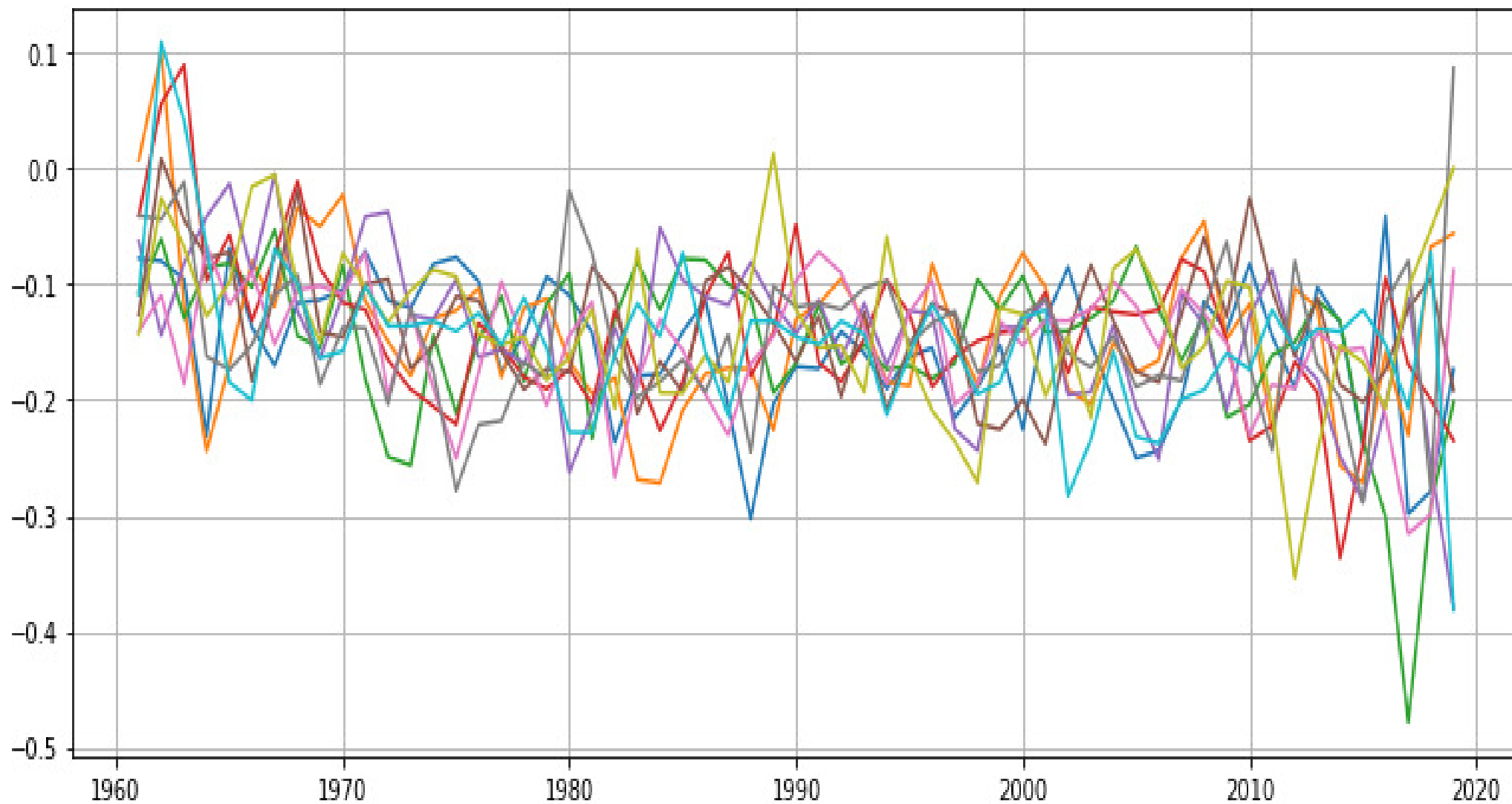
**Data, averaged on years**



**differences between anomalies and full fields, averaged on ensemble**



**Differences between full fields and anomalies, averaged on years**





Описание

Экспертный режим

опции

Инструкции

```
SOURCES .ECMWF .S2S .ECMF .forecast
.control
  SOURCES .ECMWF .S2S .ECMF .forecast
.perturbed .sfc_precip .tp
  X -40 60 RANGE
  Y 30 80 RANGE
  S (0000 25 Jun 2018) VALUE
  L (25) (28) VALUES
  [L] differences
  [M] average
  DATA 0 25 RANGE
  X Y fig- colors coasts -fig
  SOURCES .ECMWF .S2S .ECMF .reforecast
.perturbed .sfc_precip .tp
  X -40 60 RANGE
  Y 30 80 RANGE
  S (0000 21 Jun 2018) VALUE
  L (14) (21) VALUES
  [L]differences
  hdate (1998) (2017) RANGE
  [M]average
  dup
  [hdate]average
  sub
  c:
  /name /water_density def
  998 (kg/m^3) :c
  div
  /mm unitconvert
  correlationcolorscale
  DATA -20 20 RANGE
  X Y fig- colors coasts -fig
```

OK

reset

