



Institute of Monitoring of Climatic and Ecological Systems SB RAS  
Laboratory of Geosphere-Biosphere Interactions

# **Dynamics of the Arctic polar vortex during the 1984/1985 sudden stratospheric warming**

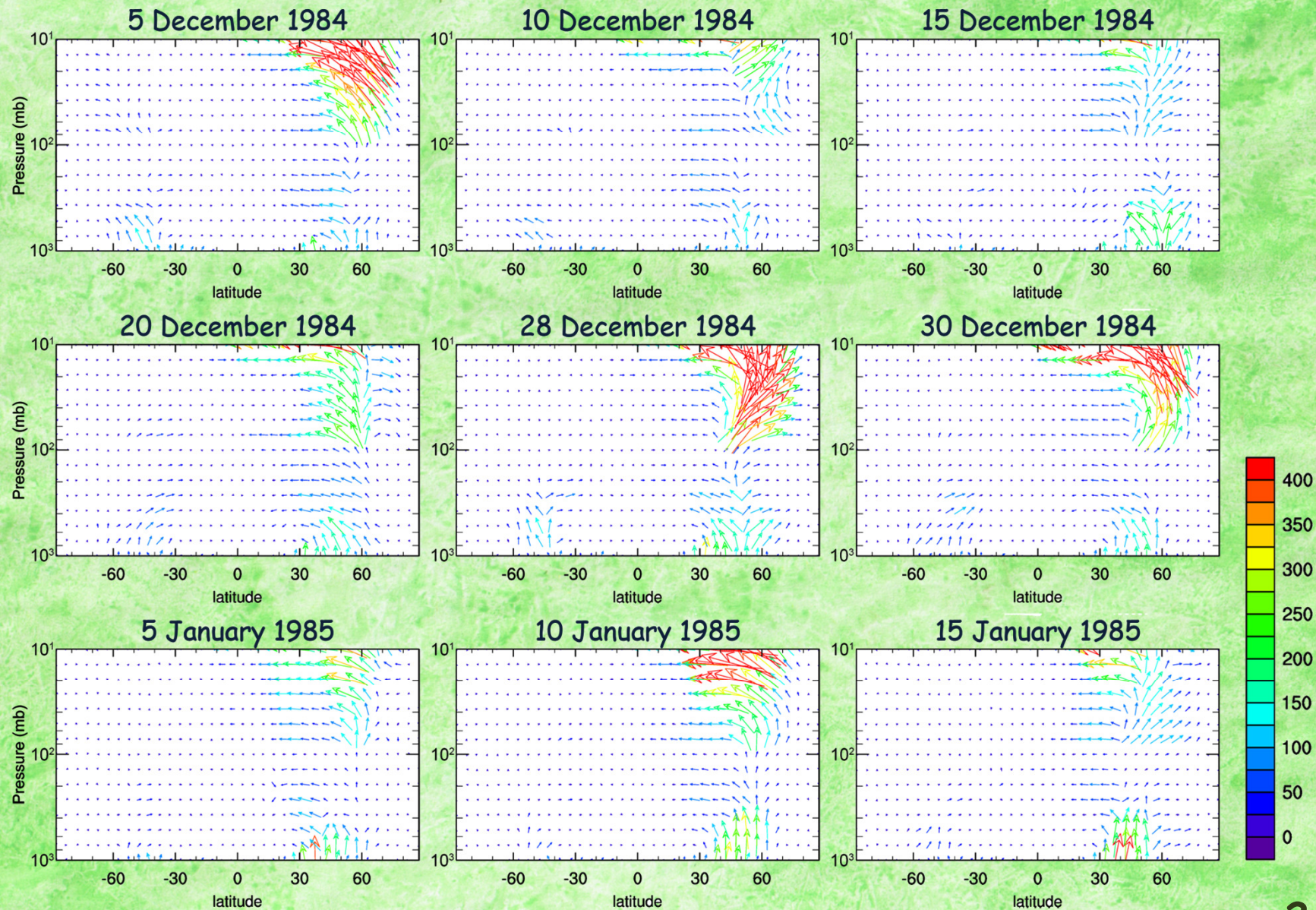
Corr. Member RAS, Prof. V.V. Zuev, PhD E. Savelieva

Moscow, 2019



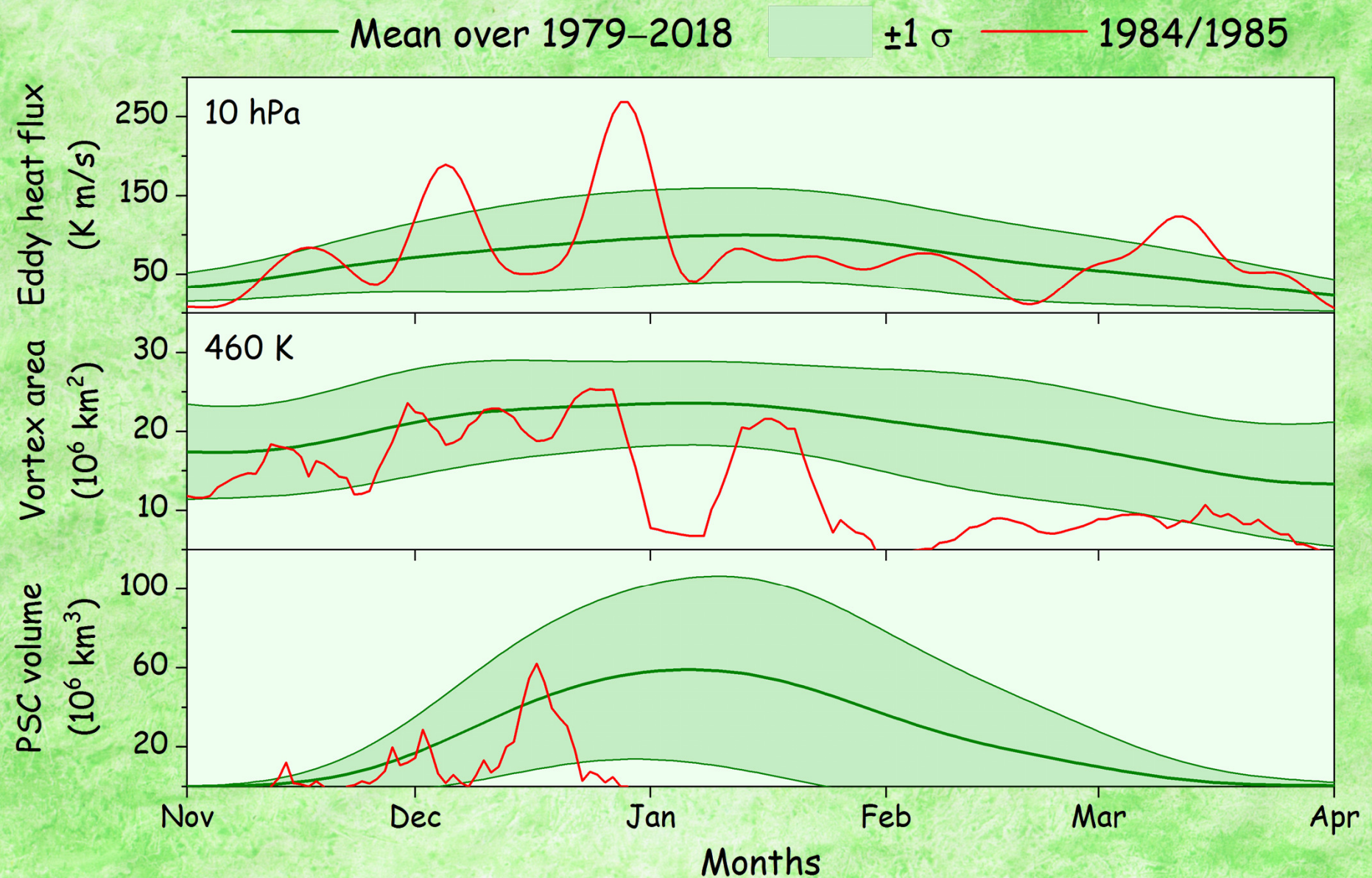
# Upward wave activity flux in the winter 1984/1985

## Eliassen-Palm flux



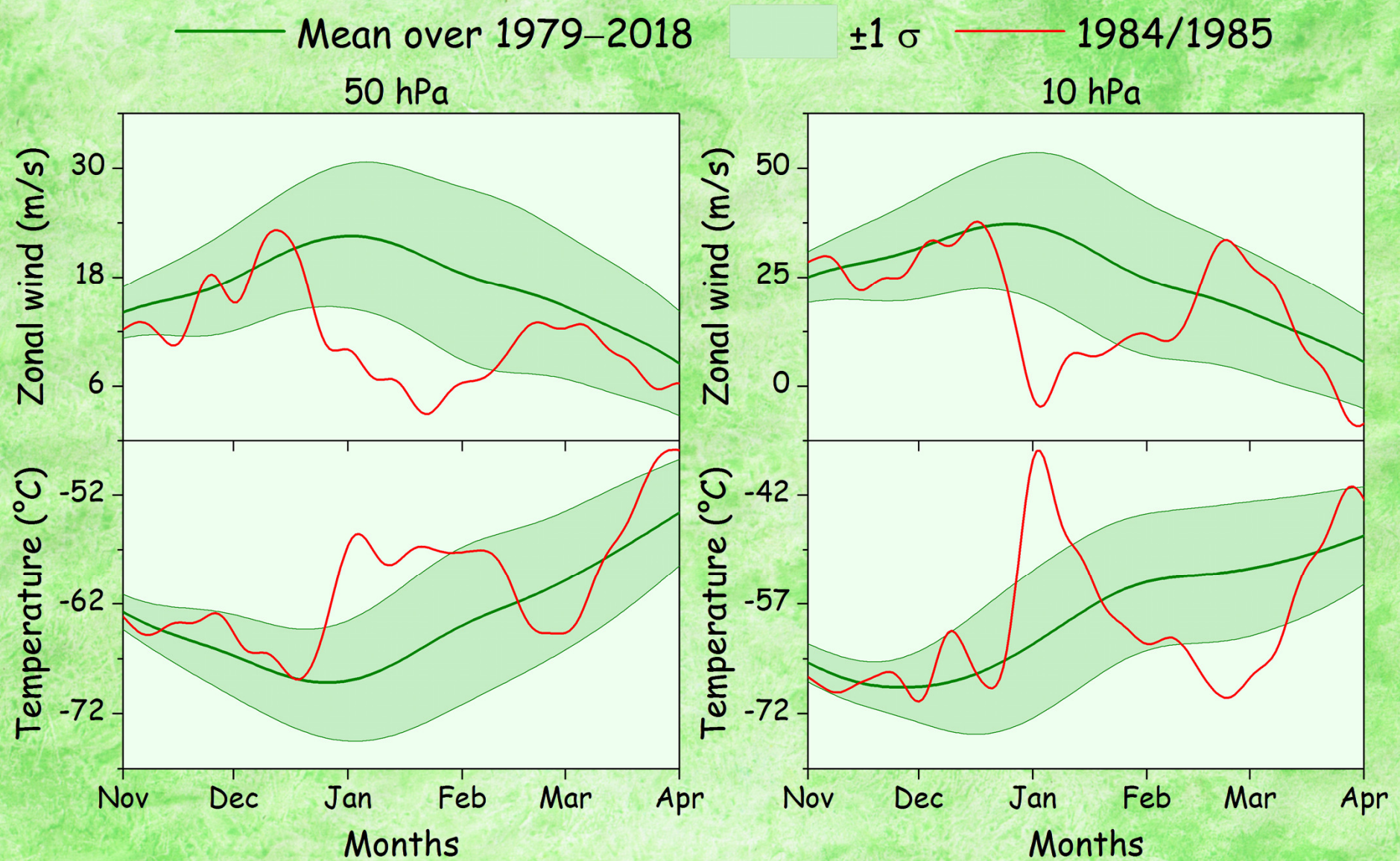


# The polar vortex dynamics during the winter 1984/1985



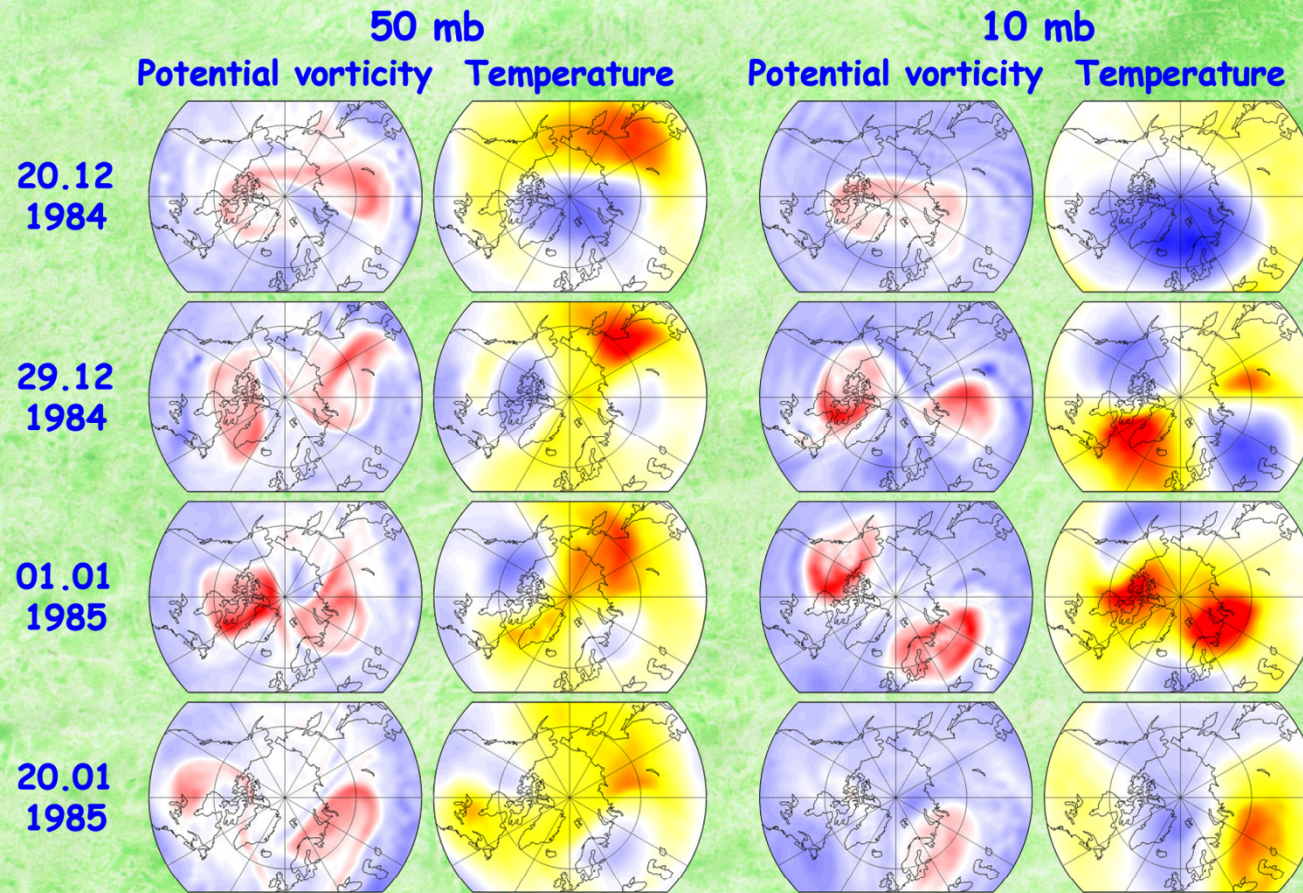


# The polar vortex dynamics during the winter 1984/1985



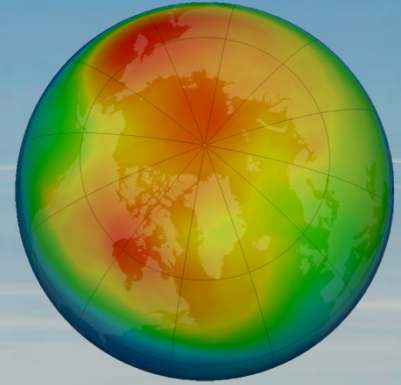


# The 1984/1985 sudden stratospheric warming



Thus, the case of the 1984/1985 SSW is one of the exceptional ones because as a result of the impact of planetary waves on 28 December the polar vortex in the lower stratosphere did not fully recover and had existed for less than 3 months since October.





Thank you for  
attention!