

Research of the Quality of Representation of the Siberian High Intensity in Reanalysis Data

(1) Khudyakova T.A., (2, 3) Martynova Yu.V.

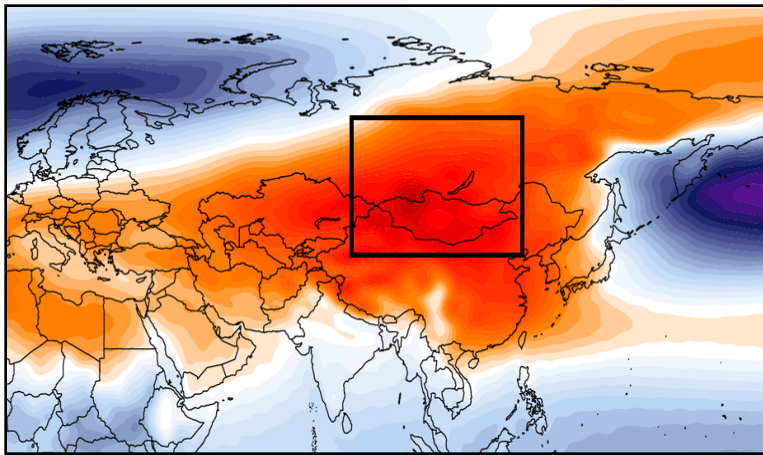
(1) Tomsk State University, Russia, <http://tsu.ru>

(2) Siberian Regional Hydrometeorological Research Institute, Novosibirsk, Russia, <http://sibnigmi.ru>

(3) Institute of Monitoring of Climatic and Ecological Systems SB RAS, Russia, Tomsk, <http://imces.ru>

E-mail: tat.khudyakova@yandex.ru, FoxyJ13@gmail.com

Research methods



40 ° - 65 ° N and 80 ° - 120 ° E

Table 1 - Meteorological stations selected for the research

Reanalyze:

- ERA-Interim
- CFSR
- JRA-55
- NCEP 2
- MERRA

The station number	Name	Latitude	Longitude	Height above sea level, m
307580	Chita	52,1	113,3	685
292630	Enisejsk	58,5	92,2	78
248170	Erbogacen	61,3	108,0	282
307100	Irkutsk	52,3	104,4	485
302300	Kirensk	57,8	108,1	261
292310	Kolpasev	58,3	82,9	76
234720	Turuhansk	65,8	98,0	37

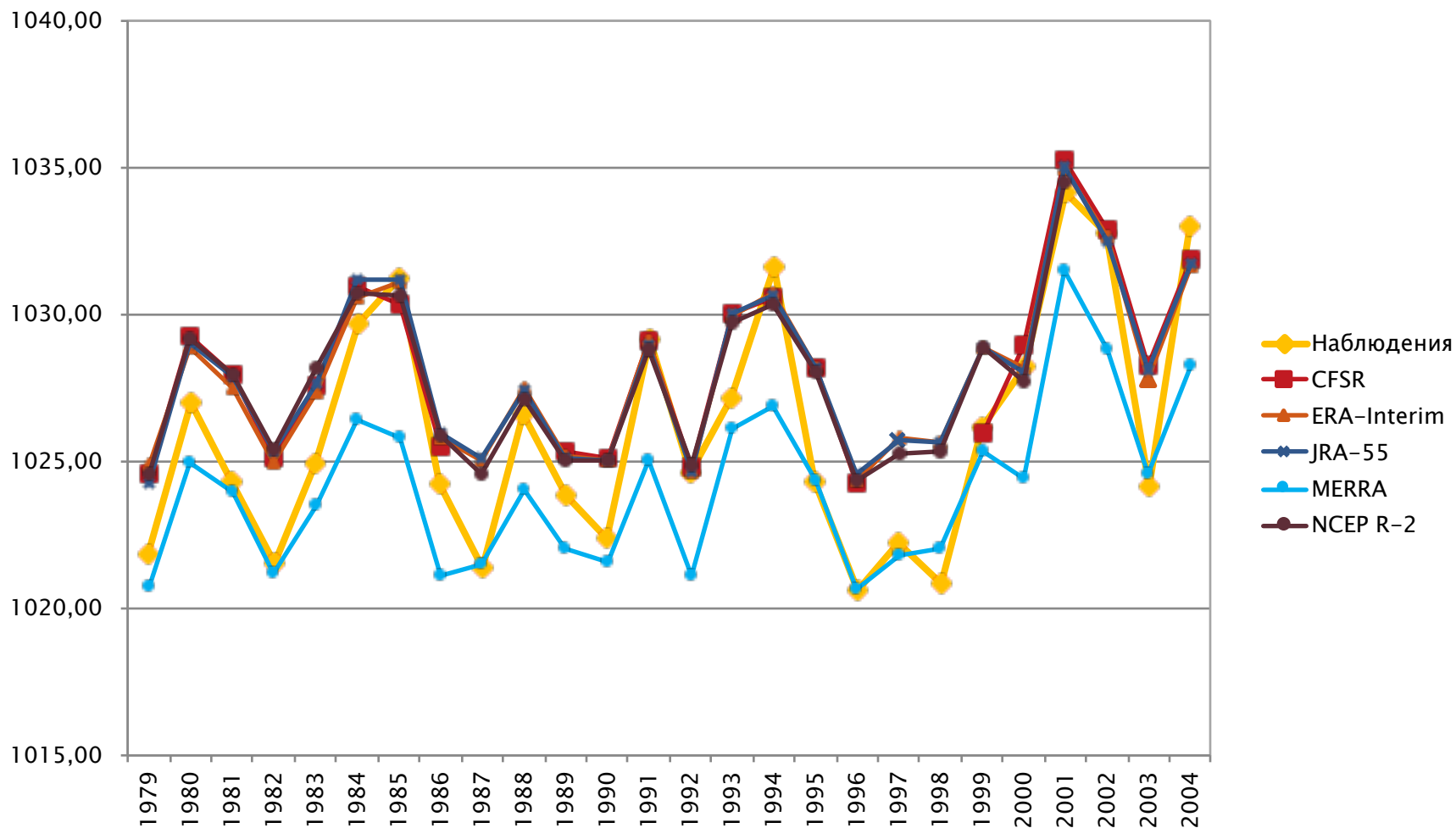


Figure 1. SHIa for December according to the meteorological observations and reanalyses for the period from 1979 to 2004 [hPa].

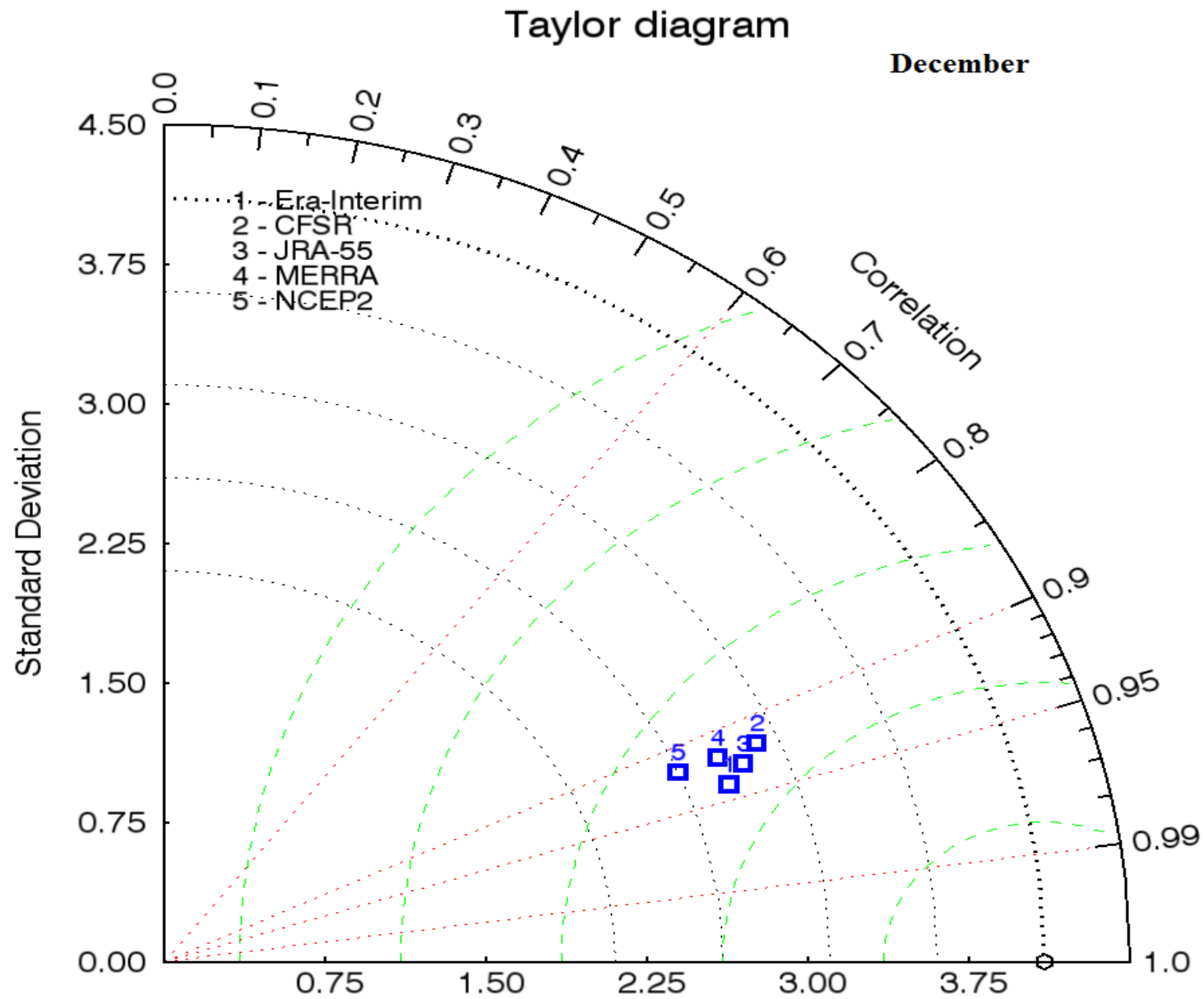


Figure 2. The difference in the intensity of the Siberian High (SHIa) calculated from data observations and reanalyses for December

*Thank you
for your attention!*

