

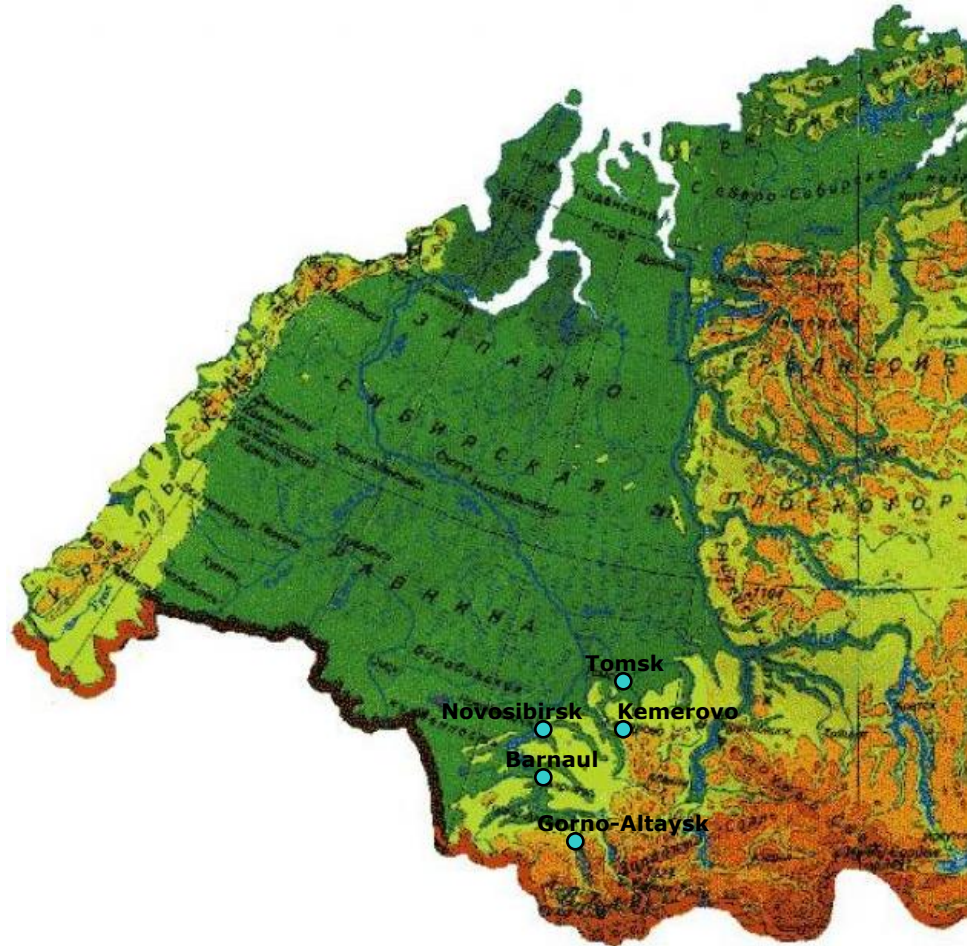


The reliability of rainfall forecast methods applied in operational practice, of the FGBU «West-Siberian administration for Hydrometeorology and environmental monitoring»

Tunaev Evgeny, Torubarova Galina

FGBU «West-Siberian administration for Hydrometeorology and environmental monitoring», Department of meteorological forecasts of hydrometeorological centre, Novosibirsk, Sovetskaya str., 30

The study area:



The obtained results: predictability of precipitation forecast by the models

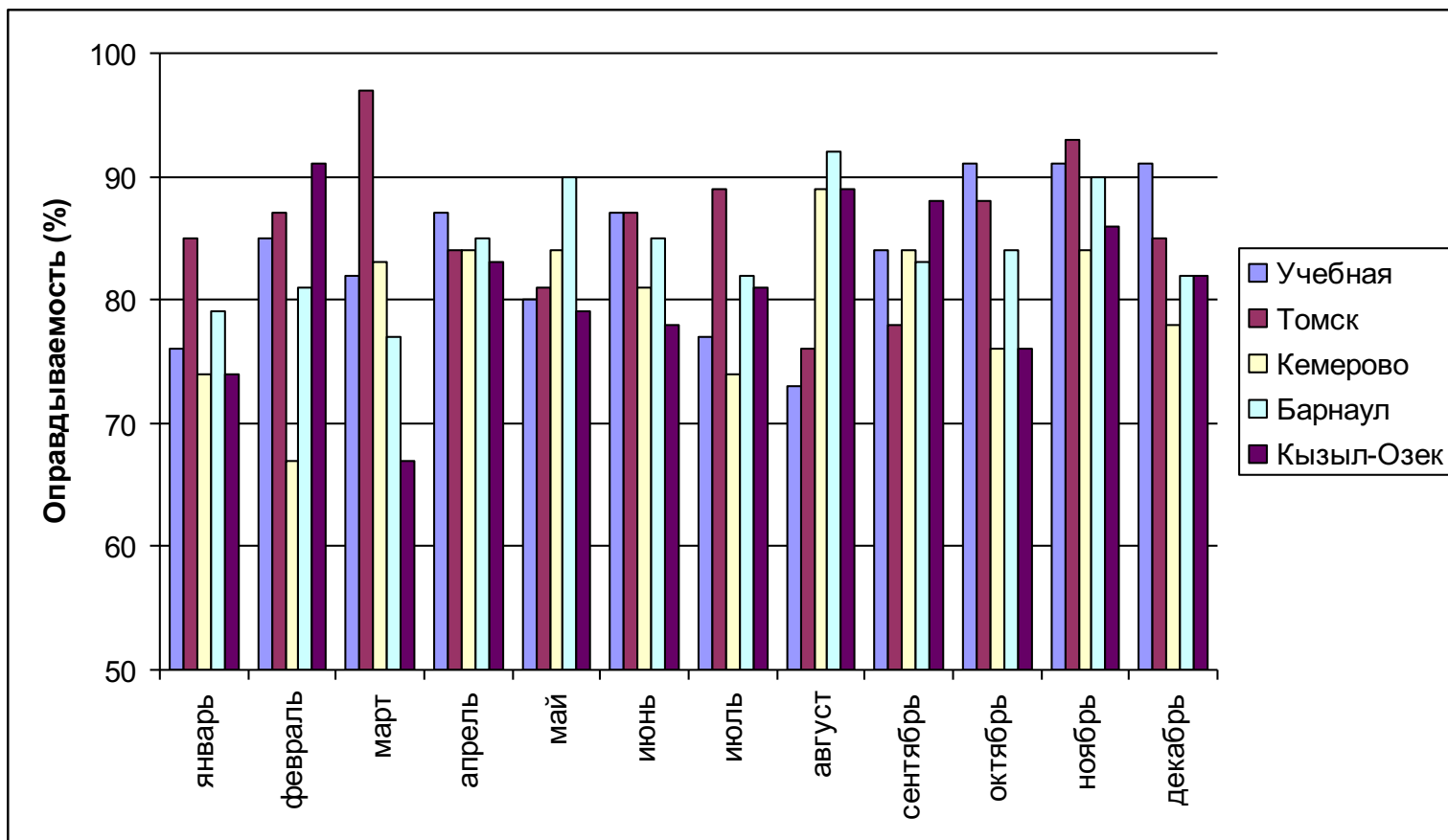


Fig. 1 - P. P. Vasilyev

The obtained results: predictability of precipitation forecast by the models

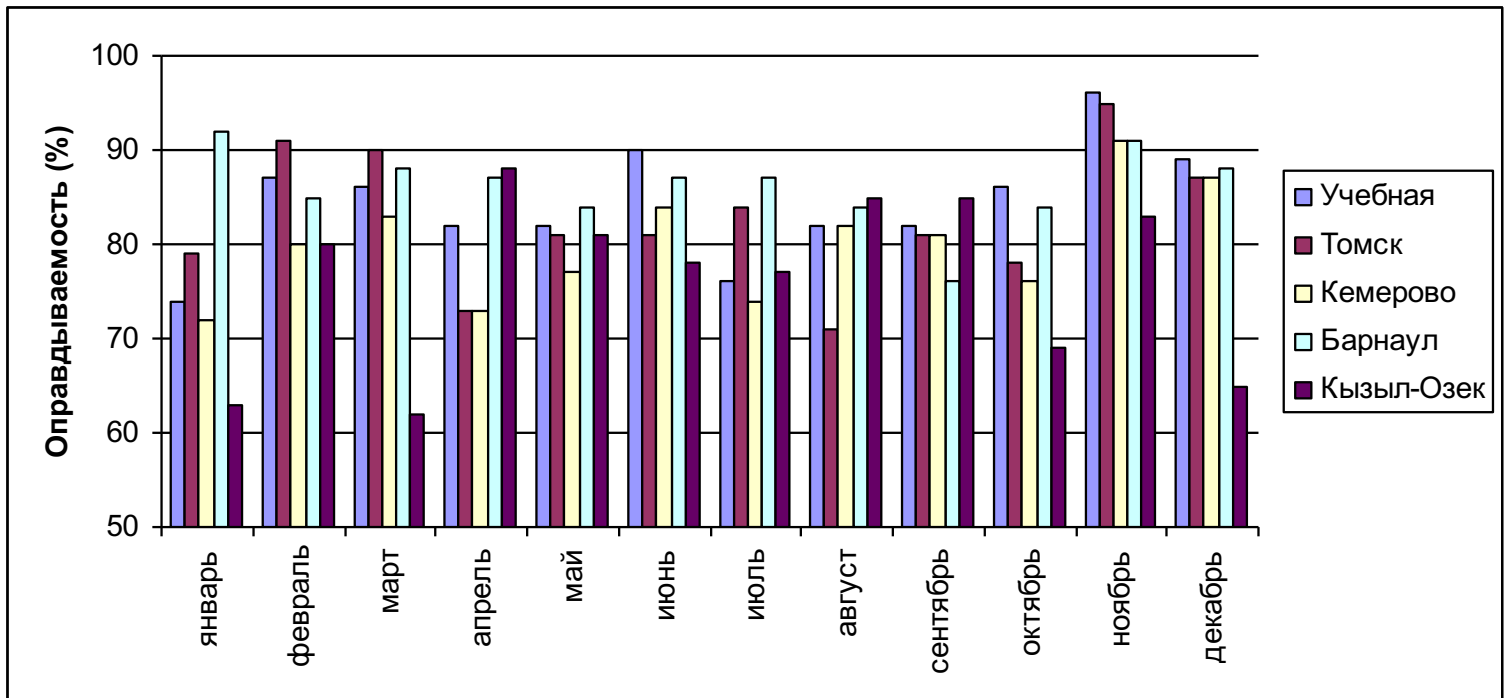


Fig. 2 - V. M. Losev

The obtained results: predictability of precipitation forecast by the models

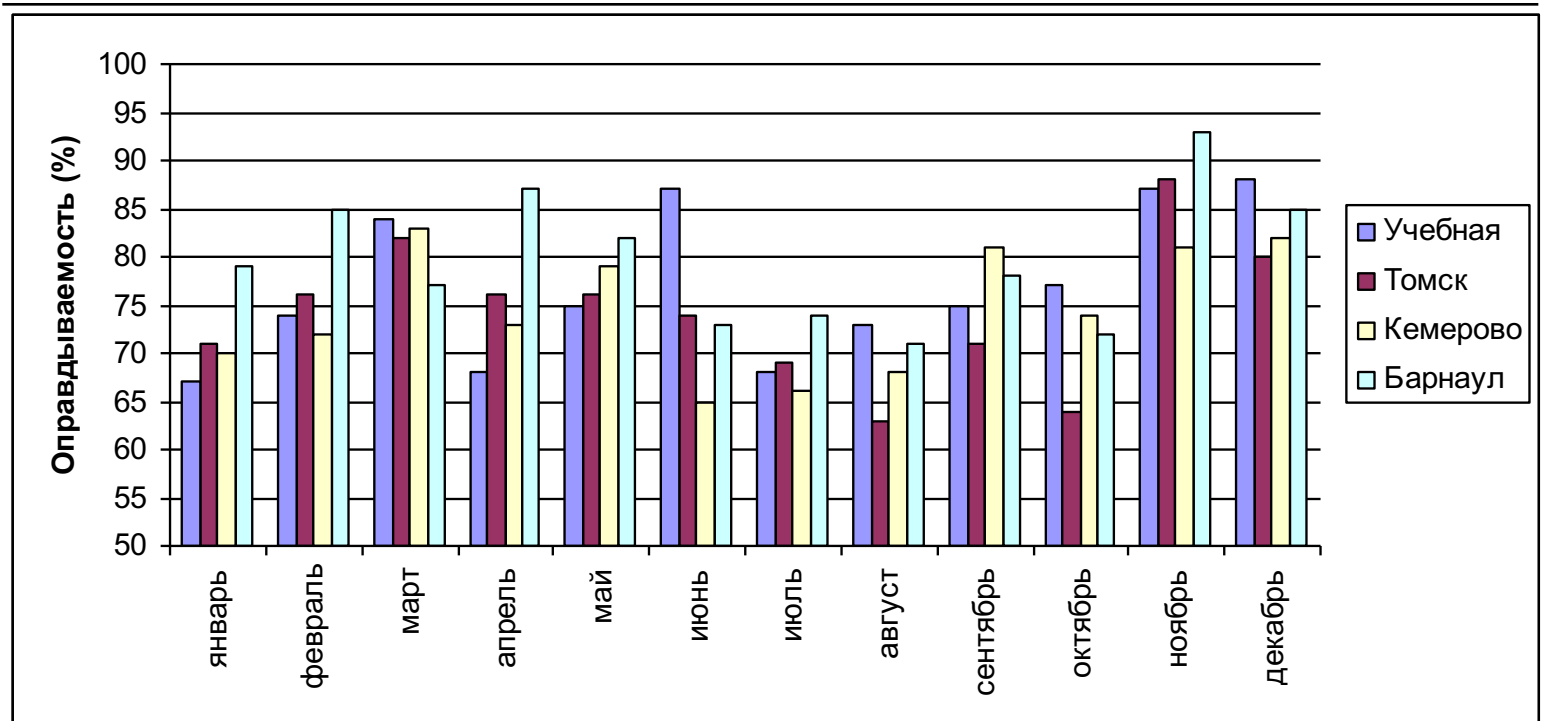


Fig. 3 FGBU "SibNIGMI"

The obtained results: predictability of precipitation forecast by the models

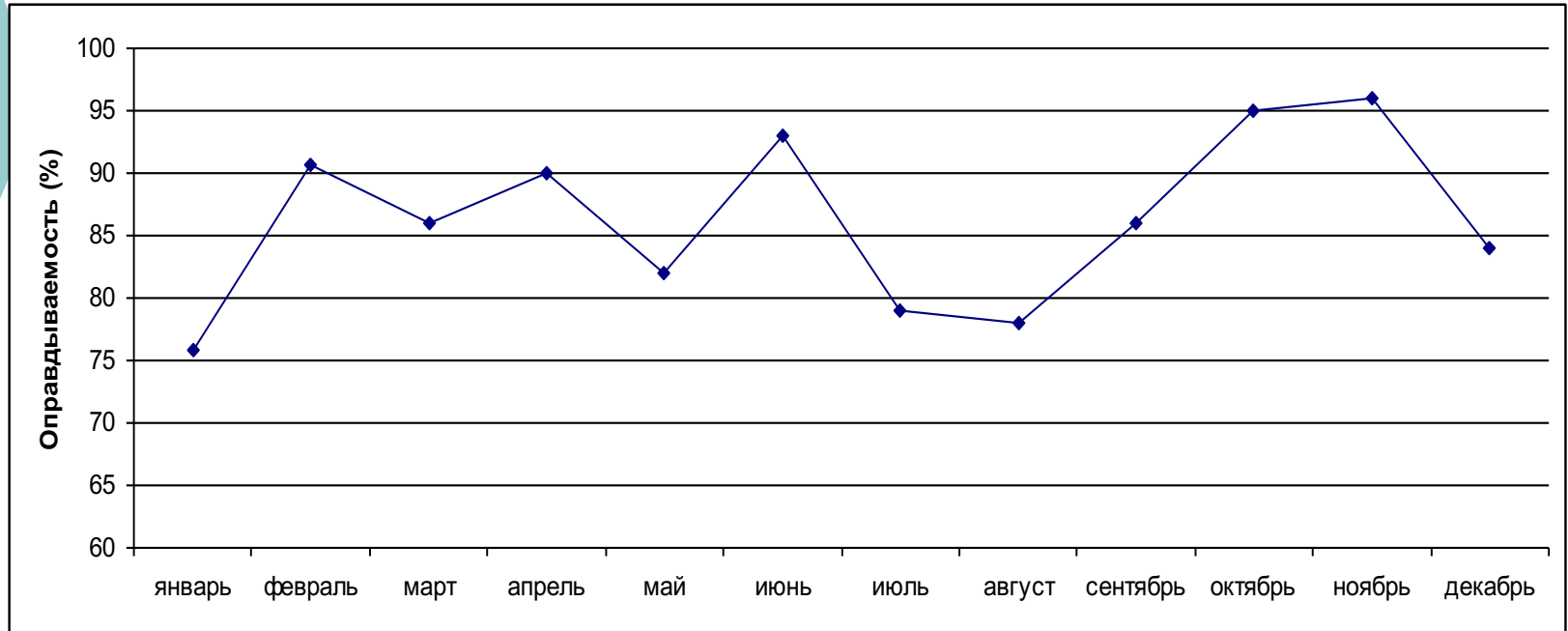
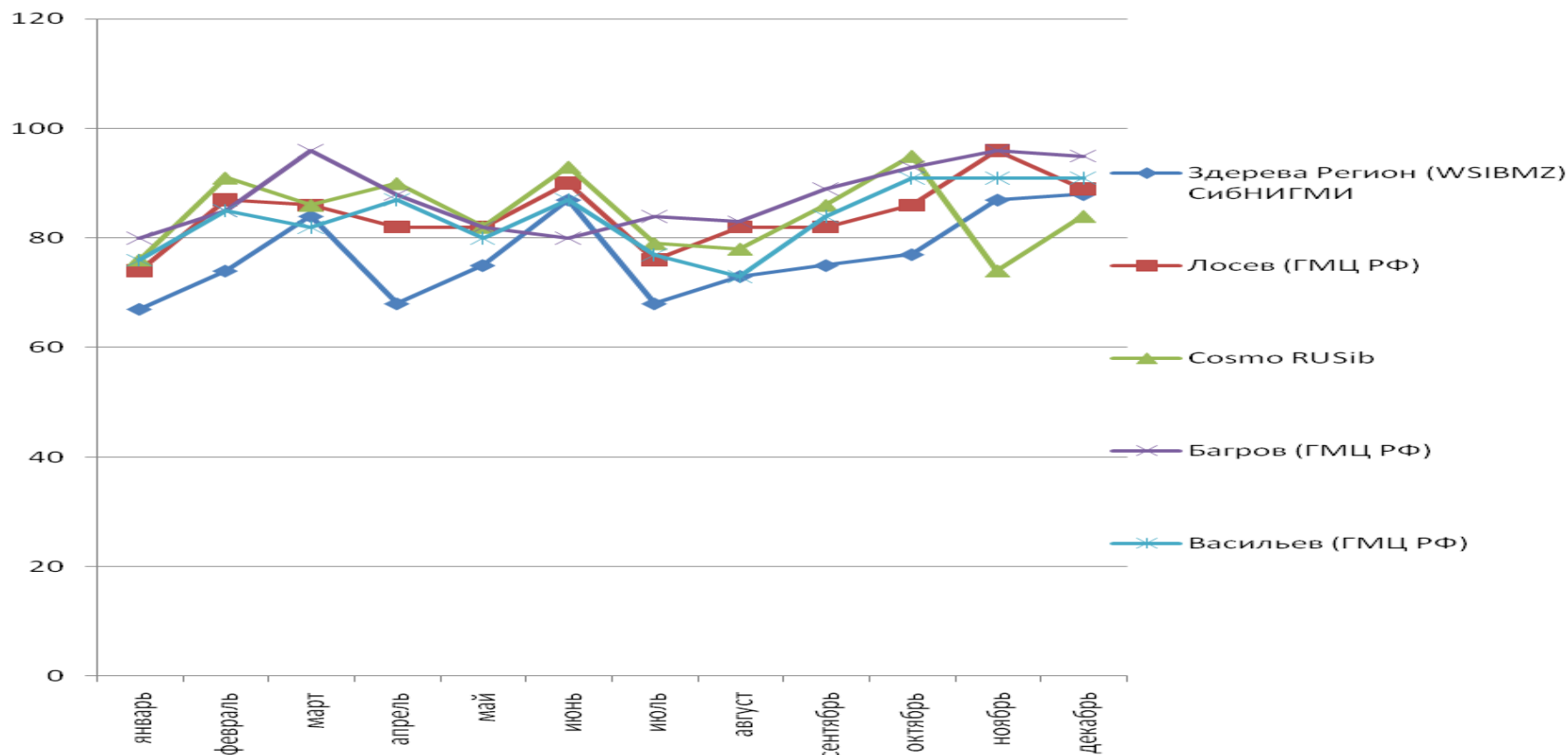


Fig. 4 COSMO EN for the territory of Novosibirsk

probability of precipitation in the different models during the period January-December 2015 for the city of Novosibirsk



Conclusions on the work done:

- Forecast of the existence of precipitation and their amount depends on the time of day.
- For Novosibirsk prognosis of the existence of precipitation are best for daytime.
- The forecast heavy rainfall on all models rarely justified.


Conclusions on the work done:

- There is a pronounced dependence of the weather forecast from the physico-geographical position of the territory.
- The predictability of all methods has a distinct annual cycle.
- The least reliability of the forecasts of the precipitation take place during the summer months.



Conclusions on the work done:

- Reliability of the methods is concentrated in the interval from 70 to 90 %, and the model of the author Losev is the best.



Thank you for your attention!!!