

Мозаичность болотных фаций южно-таежной подзоны Западной Сибири

MOSAIC STRUCTURE OF WEST SIBERIA SOUTHERN TAIGA
SUBZONE MIRE

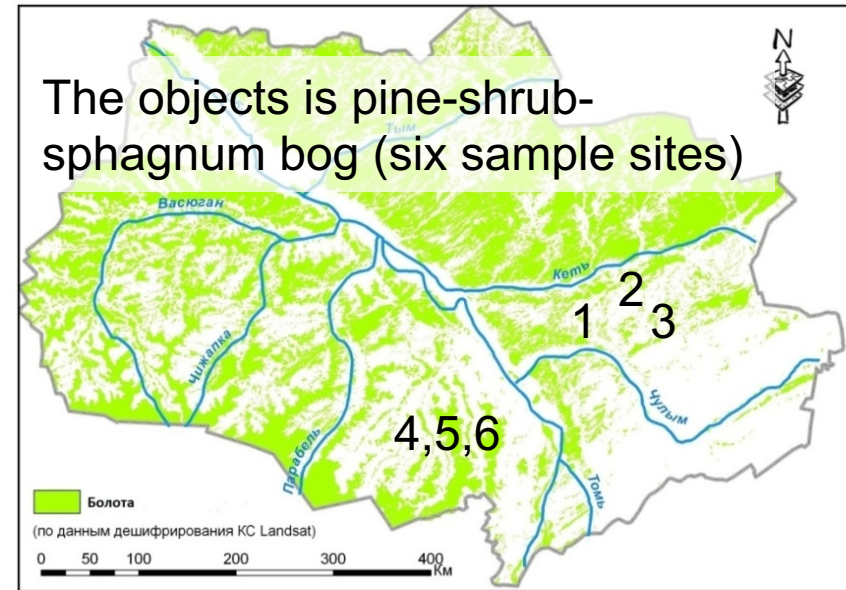
Синюткина А.А., Малолетко А.А.
Sinyutkina A.A., Maloletko A.A.

Сибирский научно-исследовательский институт
сельского хозяйства и торфа, г. Томск, Гагарина,
3,

Siberian Research Institute Agricultural and Peat,
Tomsk, Gagarina st. 3

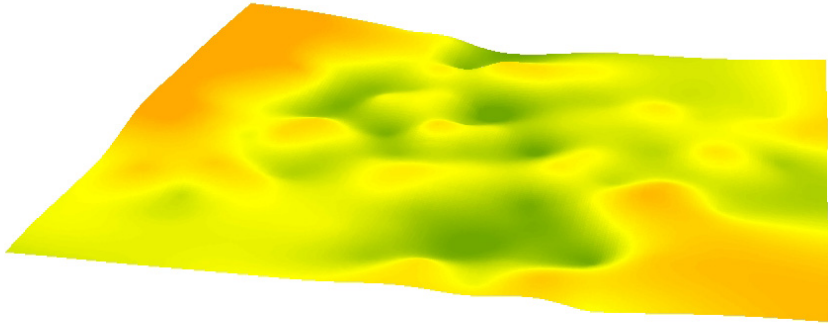
8(3822)527541, ankalaeva@yandex.ru

Goal is to define of relations microelevations and microdepressions based on an assessment of quantitative characteristics of the mire microrelief of the southern taiga subzone of West Siberia.



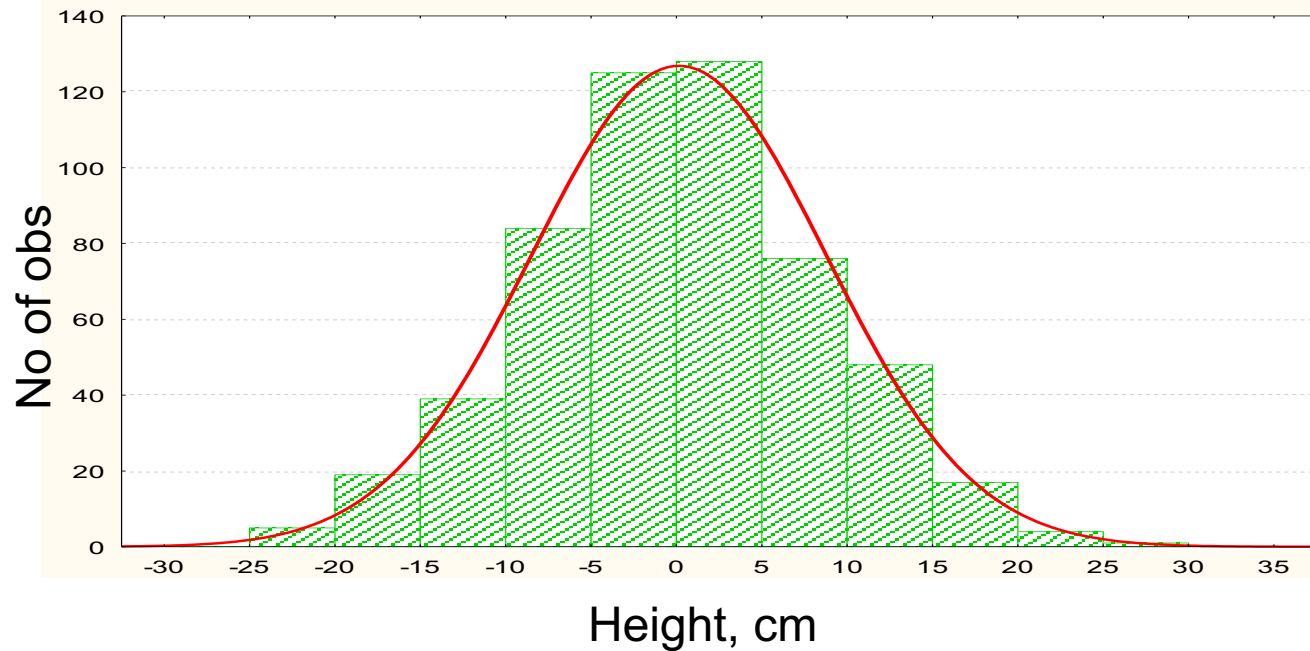
Field research included surveying of the microrelief profile with geodetic level and tacheometer. More than 800 measurements were carried out in increments of 0.5 m. Statistical analysis include the calculations of differential distribution curve, kurtosis, skewness and others.

Native bogs



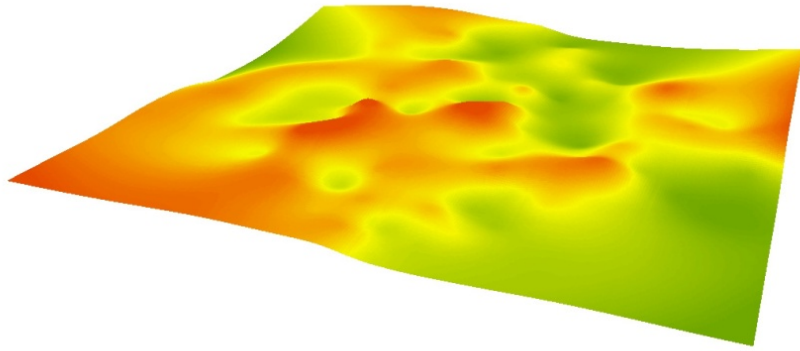
Digital model of microrelief of the site
(5 × 5 m) in native bog in the river
basin of Chaya

*Green color shows the height of the surface
below the average*



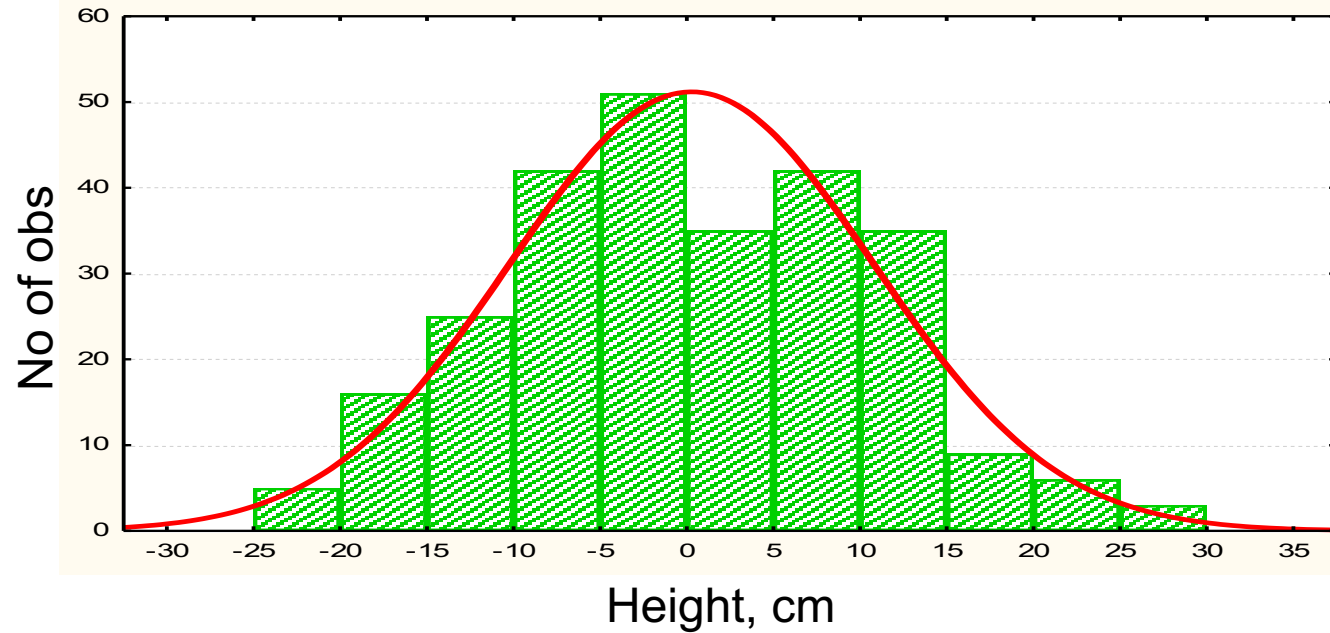
Distribution of microrelief heights of native pine-
shrub-sphagnum bogs

Drained bogs

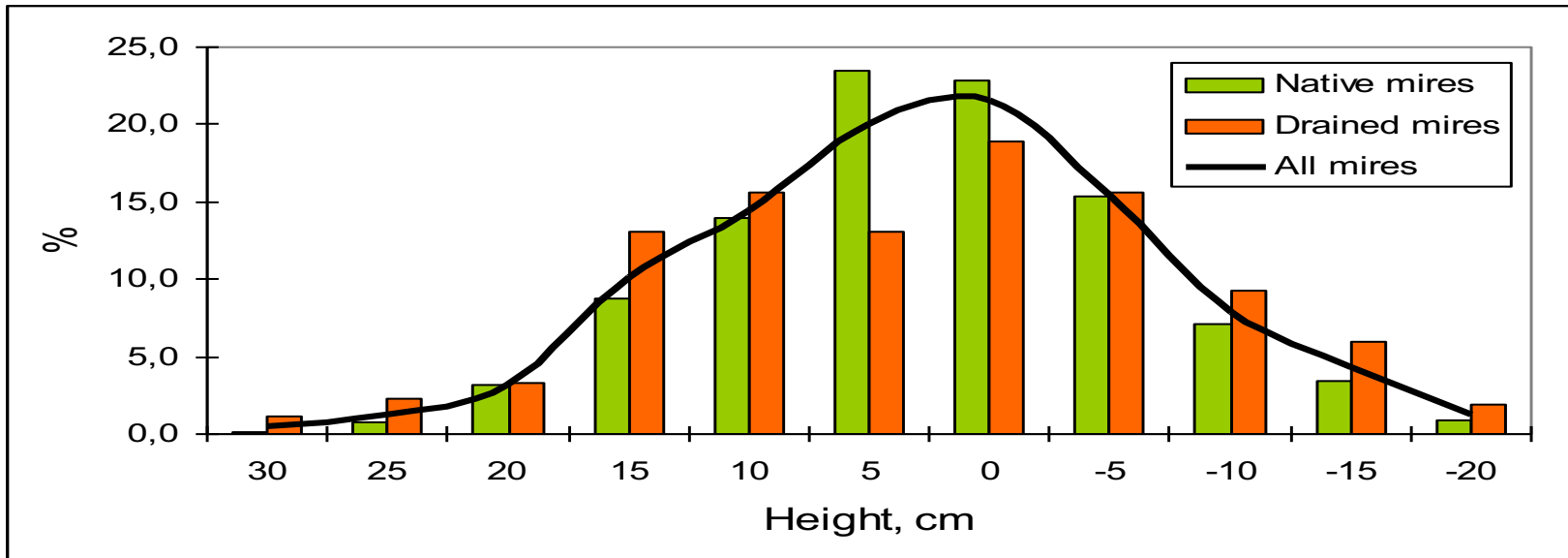


Green color shows the height of the surface below the average

Digital model of microrelief of the site
(5×5 m) in drained bog in the river
basin of Chaya



Distribution of microrelief heights of native pine-shrub-sphagnum bogs



Frequency of the microrelief height pine-shrub-sphagnum bogs

Values	Native bogs	Drained bogs
Amplitude, cm	28,8	35,0
Standard deviation, σ	8,58	10,48
Skewness, λ_1	-0,007	0,16
Kurtosis, λ_2	-0,09	-0,49

A landscape photograph showing a wide, green grassy field with scattered pine trees. The sky is bright blue with large, white, fluffy clouds. The text "THANK YOU FOR YUOR ATTANTION!" is overlaid in the lower half of the image in a white, bold, italicized font with a black outline.

***THANK YOU FOR YUOR
ATTANTION!***